

# WAC TEAM CHAMPIONS

## WAC FOOTBALL CHAMPIONS

Year	School	WAC	Pct.	All	Pct.
1962	New Mexico	2-1-1	.625	7-2-1	.750
1963	New Mexico	3-1-0	.750	6-4-0	.600
1964	Arizona	3-1-0	.750	6-3-1	.650
	Utah	3-1-0	.750	9-2-0	.818
	New Mexico	3-1-0	.750	9-2-0	.818
1965	Brigham Young	4-1-0	.800	6-4-0	.600
1966	Wyoming	5-0-0	1.000	10-1-0	.909
1967	Wyoming	5-0-0	1.000	10-1-0	.909
1968	Wyoming	6-1-0	.857	7-3-0	.700
1969	Arizona State	6-1-0	.875	8-2-0	.800
1970	Arizona State	7-0-0	1.000	11-0-0	1.000
1971	Arizona State	7-0-0	1.000	11-1-0	.917
1972	Arizona State	5-1-0	.833	10-2-0	.833
1973	Arizona	6-1-0	.857	8-3-0	.736
	Arizona State	6-1-0	.857	11-1-0	.916
1974	Brigham Young	6-0-1	.929	7-4-1	.625
1975	Arizona State	7-0-0	1.000	12-0-0	1.000
1976	Brigham Young	6-1-0	.857	9-3-0	.750
	Wyoming	6-1-0	.857	8-4-0	.667
1977	Arizona State	6-1-0	.857	9-3-0	.750
	Brigham Young	6-1-0	.857	9-2-0	.818
1978	Brigham Young	5-1-0	.833	9-4-0	.750
1979	Brigham Young	7-0-0	1.000	11-1-0	.917
1980	Brigham Young	6-1-0	.857	12-1-0	.923
1981	Brigham Young	7-1-0	.875	11-2-0	.846
1982	Brigham Young	7-1-0	.875	8-4-0	.667
1983	Brigham Young	7-0-0	1.000	11-1-0	.917
1984	Brigham Young	8-0-0	1.000	13-0-0	1.000
1985	Air Force	7-1-0	.875	12-1-0	.923
	Brigham Young	7-1-0	.875	12-3-0	.786
1986	San Diego State	7-1-0	.875	8-4-0	.667
1987	Wyoming	8-0-0	1.000	10-3-0	.769
1988	Wyoming	8-0-0	1.000	11-2-0	.846
1989	Brigham Young	7-1-0	.875	10-3-0	.769
1990	Brigham Young	7-1-0	.875	10-3-0	.769
1991	Brigham Young	7-0-1	.938	8-3-2	.692
1992	Hawai'i	6-2-0	.750	11-2-0	.846
	Fresno State	6-2-0	.750	9-4-0	.692
	Brigham Young	6-2-0	.750	8-5-0	.615
1993	Brigham Young	6-2-0	.750	6-6-0	.500
	Fresno State	6-2-0	.750	8-4-0	.667
	Wyoming	6-2-0	.750	8-4-0	.667
1994	Colorado State	7-1-0	.875	10-2-0	.833
1995	Colorado State	6-2-0	.750	8-4-0	.667
	Brigham Young	6-2-0	.750	7-4-0	.636
	Utah	6-2-0	.750	7-4-0	.636
	Air Force	6-2-0	.750	8-5-0	.615
1996	Wyoming-Pac.	7-1	.875	10-1	.909
	*Brigham Young-Mtn.	8-0	1.000	14-1	.933
1997	*Colorado State-Pac.	7-1	.875	11-2	.846
	New Mexico-Mtn.	6-2	.750	9-4	.692
1998	Brigham Young-Pac.	7-1	.875	9-5	.643
	*Air Force-Mtn.	7-1	.875	12-1	.923
1999	Hawai'i	5-2	.714	9-4	.692
	TCU	5-2	.714	8-4	.667
	Fresno State	5-2	.714	8-5	.615
2000	TCU	7-1	.875	10-2	.833
	UTEP	7-1	.875	8-4	.667
2001	Louisiana Tech	7-1	.875	7-5	.583
2002	Boise State	8-0	1.000	12-1	.923
2003	Boise State	8-0	1.000	13-1	.929
2004	Boise State	8-0	1.000	11-1	.917
2005	Nevada	7-1	.875	9-3	.750
	Boise State	7-1	.875	9-4	.692
2006	Boise State	8-0	1.000	13-0	1.000
2007	Hawai'i	8-0	1.000	12-1	.923
2008	Boise State	8-0	1.000	12-1	.923
2009	Boise State	8-0	1.000	14-0	1.000
2010	Nevada	7-1	.875	13-1	.929
	Boise State	7-1	.875	12-1	.923
	Hawai'i	7-1	.875	10-4	.714
2011	Louisiana Tech	6-1	.857	8-5	.615

\*Conference champion

## ALL-TIME WAC TITLES

Team	Outright	Shared	Total
Brigham Young <b>(1965-74-76-77-78-79-80-81-82-83-84-85-89-90-91-92-93-95-96)</b>	13	6	19
Boise State <b>(2002-03-04-05-06-08-09-10)</b>	6	2	8
Arizona State <b>(1969-70-71-72-73-75-77)</b>	5	2	7
Wyoming <b>(1966-67-68-76-87-88-93)</b>	5	2	7
Hawai'i <b>(1992-99-08-10)</b>	1	3	4
Colorado State <b>(1994-95-97)</b>	2	1	3
New Mexico <b>(1962-63-64)</b>	2	1	3
Air Force <b>(1985-95-98)</b>	1	2	3
Fresno State <b>(1992-93-99)</b>	0	3	3
Arizona <b>(1964-73)</b>	0	2	2
Louisiana Tech <b>(2001-11)</b>	2	0	2
Nevada <b>(2005-10)</b>	0	2	2
TCU <b>(1999-00)</b>	0	2	2
Utah <b>(1964-95)</b>	0	2	2
San Diego State <b>(1986)</b>	1	0	1
UTEP <b>(2000)</b>	0	1	1

**Boldface** denotes outright titles

## PERFECT TEAMS

### ALL GAMES

Year	School	All	WAC
1970	Arizona State	11-0	7-0
1975	Arizona State	12-0	7-0
1984	Brigham Young	13-0	8-0
2006	Boise State	13-0	8-0
2009	Boise State	14-0	8-0

### WAC GAMES

Year	School	WAC	All
1966	Wyoming	5-0	10-1
1967	Wyoming	5-0	10-1
1970	Arizona State	7-0	11-0
1971	Arizona State	7-0	11-1
1975	Arizona State	7-0	12-0
1979	Brigham Young	7-0	11-1
1983	Brigham Young	7-0	11-1
1984	Brigham Young	8-0	13-0
1987	Wyoming	8-0	10-3
1988	Wyoming	8-0	11-2
1996	Brigham Young	8-0	14-1
2002	Boise State	8-0	12-1
2003	Boise State	8-0	13-1
2004	Boise State	8-0	11-1
2006	Boise State	8-0	13-0
2007	Hawai'i	8-0	12-1
2008	Boise State	8-0	12-1
2009	Boise State	8-0	14-0

# SERIES HISTORY

## IDAHO

	Louisiana Tech	New Mexico State	San Jose State	UTSA	Texas State	Utah State
2005	*L 38-41	!W 38-37	L 18-26	—	—	*W 27-13
2006	W 24-14	*W 28-20	*L 13-28	—	—	W 41-21
2007	*L 16-28	L 31-45	L 20-28	—	—	*L 19-24
2008	L 14-46	*W 20-14	*L 24-30	—	—	L 17-42
2009	*W 35-34	W 21-6	W 29-25	—	—	*L 49-52
2010	L 35-48	*W 37-14	*!W 26-23	—	—	W 28-6
2011	*L 11-24	L 24-31	W 32-29	—	—	*!L 42-49

## LOUISIANA TECH

	Idaho	New Mexico State	San Jose State	UTSA	Texas State	Utah State
2001	—	—	*W 41-20	—	—	—
2002	—	—	L 30-42	—	—	—
2003	—	—	—	—	—	—
2004	—	—	—	—	—	—
2005	W 41-38	*W 34-14	*W 31-14	—	—	W 27-17
2006	*L 14-24	L 23-50	L 10-44	—	—	*W 48-35
2007	W 28-16	*W 22-21	*W 27-23	—	—	W 31-21
2008	*W 46-14	W 35-31	W 21-0	—	—	*W 45-38
2009	L 34-35	*W 45-7	*W 55-20	—	—	L 21-23
2010	*W 48-35	W 41-20	W 45-38	—	—	*W 24-6
2011	W 24-11	*W 44-0	*W 38-28	—	—	W 24-17

## NEW MEXICO STATE

	Idaho	Louisiana Tech	San Jose State	UTSA	Texas State	Utah State
2005	*!L 37-38	L 14-34	L 10-27	—	—	*L 21-24
2006	L 20-28	*W 50-23	*L 21-31	—	—	W 42-20
2007	*W 45-31	L 21-22	L 17-51	—	—	*L 17-35
2008	L 14-20	*L 31-35	*L 14-31	—	—	L 2-47
2009	*L 6-21	L 7-45	L 10-13	—	—	*W 20-17
2010	L 14-37	*L 20-41	*W 29-27	—	—	L 22-27
2011	*W 31-24	L 0-44	L 24-34	—	—	*L 21-24

## SAN JOSE STATE

	Idaho	Louisiana Tech	New Mexico State	UTSA	Texas State	Utah State
1996	—	—	—	—	—	—
1997	—	—	—	—	—	—
1998	—	—	—	—	—	—
1999	—	—	—	—	—	—
2000	—	—	—	—	—	—
2001	—	L 20-41	—	—	—	—
2002	—	*W 42-30	—	—	—	—
2003	—	—	—	—	—	—
2004	—	—	—	—	—	—
2005	*W 26-18	L 14-31	*W 27-10	—	—	L 17-24
2006	W 28-13	*W 44-10	W 31-21	—	—	*W 21-14
2007	*W 28-20	L 23-27	*W 51-17	—	—	W 23-20
2008	W 30-24	*L 0-21	W 31-14	—	—	*W 30-7
2009	*L 25-29	L 20-55	*W 13-10	—	—	L 9-24
2010	!L 23-26	*L 38-45	L 27-29	—	—	*L 34-38
2011	*L 29-32	L 28-38	*W 34-24	—	—	L 33-34

## UTAH STATE

	Idaho	Louisiana Tech	New Mexico State	San Jose State	UTSA	Texas State
2005	L 13-27	*L 17-27	W 24-21	*W 24-17	—	—
2006	*L 21-41	L 35-48	*L 20-42	L 14-21	—	—
2007	W 24-19	*L 21-31	W 35-17	*L 20-23	—	—
2008	*W 42-17	L 38-45	*W 47-2	L 7-30	—	—
2009	W 52-49	*W 23-21	L 17-20	*W 24-9	—	—
2010	*L 6-28	L 6-24	*W 27-22	W 38-34	—	—
2011	!W 49-42	*L 17-24	W 24-21	*W 34-33	—	—

Games Played as WAC Members Only

\*Home Games

!Overtime Games

# INTRACONFERENCE RECORDS

## IDAHO

Team	WAC Games					All Games				
	G	W	L	T	PCT.	G	W	L	T	PCT.
Louisiana Tech	7	2	5	0	.286	7	2	5	0	.286
New Mexico State	7	5	2	0	.714	18	13	5	0	.722
San Jose State	7	3	4	0	.429	23	10	12	1	.457
UTSA	0	0	0	0	—	0	0	0	0	—
Texas State	0	0	0	0	—	4	3	1	0	.750
Utah State	7	3	4	0	.429	38	17	19	2	.474
<b>Total</b>	<b>28</b>	<b>13</b>	<b>15</b>	<b>0</b>	<b>.464</b>	<b>90</b>	<b>45</b>	<b>42</b>	<b>3</b>	<b>.517</b>

## LOUISIANA TECH

Team	WAC Games					All Games				
	G	W	L	T	PCT.	G	W	L	T	PCT.
Idaho	7	5	2	0	.714	7	5	2	0	.714
New Mexico State	7	6	1	0	.857	11	7	4	0	.636
San Jose State	9	7	2	0	.778	11	7	4	0	.636
UTSA	0	0	0	0	—	0	0	0	0	—
Texas State	0	0	0	0	—	4	3	1	0	.750
Utah State	7	6	1	0	.857	9	6	3	0	.667
<b>Total</b>	<b>30</b>	<b>24</b>	<b>6</b>	<b>0</b>	<b>.800</b>	<b>42</b>	<b>28</b>	<b>14</b>	<b>0</b>	<b>.667</b>

## NEW MEXICO STATE

Team	WAC Games					All Games				
	G	W	L	T	PCT.	G	W	L	T	PCT.
Idaho	7	2	5	0	.286	18	5	13	0	.278
Louisiana Tech	7	1	6	0	.143	11	4	7	0	.364
San Jose State	7	1	6	0	.143	19	3	16	0	.158
UTSA	0	0	0	0	—	0	0	0	0	—
Texas State	0	0	0	0	—	0	0	0	0	—
Utah State	7	2	5	0	.286	36	7	29	0	.194
<b>Total</b>	<b>28</b>	<b>6</b>	<b>22</b>	<b>0</b>	<b>.214</b>	<b>84</b>	<b>19</b>	<b>65</b>	<b>0</b>	<b>.226</b>

## SAN JOSE STATE

Team	WAC Games					All Games				
	G	W	L	T	PCT.	G	W	L	T	PCT.
Idaho	7	4	3	0	.571	23	12	10	1	.543
Louisiana Tech	9	2	7	0	.222	11	4	7	0	.364
New Mexico State	7	6	1	0	.857	19	16	3	0	.842
UTSA	0	0	0	0	—	0	0	0	0	—
Texas State	0	0	0	0	—	0	0	0	0	—
Utah State	7	3	4	0	.429	34	20	13	1	.603
<b>Total</b>	<b>30</b>	<b>15</b>	<b>15</b>	<b>0</b>	<b>.500</b>	<b>87</b>	<b>52</b>	<b>33</b>	<b>2</b>	<b>.609</b>

## UTSA

Team	WAC Games					All Games				
	G	W	L	T	PCT.	G	W	L	T	PCT.
Idaho	0	0	0	0	—	0	0	0	0	—
Louisiana Tech	0	0	0	0	—	0	0	0	0	—
New Mexico State	0	0	0	0	—	0	0	0	0	—
San Jose State	0	0	0	0	—	0	0	0	0	—
Texas State	0	0	0	0	—	0	0	0	0	—
Utah State	0	0	0	0	—	0	0	0	0	—
<b>Total</b>	<b>0</b>	<b>0</b>	<b>0</b>	<b>0</b>	<b>—</b>	<b>0</b>	<b>0</b>	<b>0</b>	<b>0</b>	<b>—</b>

## TEXAS STATE

Team	WAC Games					All Games				
	G	W	L	T	PCT.	G	W	L	T	PCT.
Idaho	0	0	0	0	—	4	1	3	0	.250
Louisiana Tech	0	0	0	0	—	4	1	3	0	.250
New Mexico State	0	0	0	0	—	0	0	0	0	—
San Jose State	0	0	0	0	—	0	0	0	0	—
UTSA	0	0	0	0	—	0	0	0	0	—
Utah State	0	0	0	0	—	0	0	0	0	—
<b>Total</b>	<b>0</b>	<b>0</b>	<b>0</b>	<b>0</b>	<b>—</b>	<b>8</b>	<b>2</b>	<b>6</b>	<b>0</b>	<b>.250</b>

## UTAH STATE

Team	WAC Games					All Games				
	G	W	L	T	PCT.	G	W	L	T	PCT.
Idaho	7	4	3	0	.571	38	19	17	2	.526
Louisiana Tech	7	1	6	0	.143	9	3	6	0	.333
New Mexico State	7	5	2	0	.714	36	29	7	0	.806
San Jose State	7	4	3	0	.571	34	13	20	1	.397
UTSA	0	0	0	0	—	0	0	0	0	—
Texas State	0	0	0	0	—	0	0	0	0	—
<b>Total</b>	<b>28</b>	<b>14</b>	<b>14</b>	<b>0</b>	<b>.500</b>	<b>117</b>	<b>64</b>	<b>50</b>	<b>3</b>	<b>.560</b>

## NON-CONFERENCE

Year	W	L	T	Pct.	Year	W	L	T	Pct.	Year	W	L	T	Pct.	Year	W	L	T	Pct.
1962	22	15	1	.592	1975	16	20	0	.444	1988	20	18	0	.526	2001	16	20	0	.444
1963	22	15	1	.592	1976	13	22	0	.371	1989	17	18	2	.486	2002	14	28	0	.333
1964	29	6	4	.795	1977	19	18	2	.513	1990	19	15	0	.559	2003	17	26	0	.395
1965	13	19	0	.406	1978	18	22	0	.450	1991	16	17	1	.485	2004	17	17	0	.500
1966	18	13	0	.581	1979	19	16	1	.542	1992	18	16	1	.529	2005	9	22	0	.290
1967	17	14	1	.547	1980	16	24	1	.402	1993	17	19	0	.472	2006	18	20	0	.474
1968	11	23	0	.324	1981	19	19	0	.500	1994	23	13	1	.635	2007	17	20	0	.459
1969	18	11	0	.621	1982	21	17	0	.553	1995	19	16	0	.543	2008	18	19	0	.486
1970	17	16	0	.515	1983	20	18	0	.526	1996	24	29	0	.453	2009	19	20	0	.487
1971	17	18	2	.486	1984	18	17	1	.514	1997	24	30	0	.444	2010	23	17	0	.575
1972	10	25	0	.286	1985	17	18	1	.486	1998	20	34	0	.370	2011	15	28	0	.349
1973	17	19	0	.472	1986	16	20	0	.444	1999	15	20	0	.429					
1974	12	23	1	.347	1987	15	19	0	.441	2000	12	20	0	.375					

Regular Season Games Only

## COMPOSITE STANDINGS

## WAC GAMES ONLY (1962-2009)

School	Years	Games	Home	Away	Neutral	*Designated	Total	Pct.
Idaho	7	55	7-21-0	7-20-0	0-0	0-0	14-41-0	.255
Louisiana Tech	11	87	27-16-0	20-24-0	0-0	0-0	47-40-0	.540
New Mexico State	7	55	6-22-0	2-25-0	0-0	0-0	8-47-0	.145
San Jose State	16	125	27-34-0	18-46-0	0-0	0-0	45-80-0	.360
UTSA	0							
Texas State	0							
Utah State	7	55	10-17-0	8-20-0	0-0	0-0	18-37-0	.327

\*Designated games not included in home and away records

## ALL GAMES AS WAC MEMBER

School	Games	Home	Pct.	Away	Pct.	Neutral	Total	Pct.
Idaho	85	15-24-0	.385	9-36-0	.200	1-0	25-60-0	.294
Louisiana Tech	134	37-19-0	.661	24-50-0	.324	2-2	63-71-0	.470
New Mexico State	87	14-30-0	.318	6-37-0	.140	0-0	20-67-0	.230
San Jose State	189	42-40-0	.512	23-83-0	.217	1-0	66-123-0	.349
UTSA	0							
Texas State	0							
Utah State	84	16-22-0	.421	8-37-0	.178	0-1	24-60-0	.286

## ALL GAMES ALL-TIME

School	Years	Games	Won	Lost	Tied	Pct.
Idaho	114	992	424	545	23	.439
Louisiana Tech	110	1024	564	423	37	.569
New Mexico State	115	1017	412	575	30	.420
San Jose State	93	949	453	458	38	.497
UTSA	1	10	4	6	0	.400
Texas State	98	925	491	408	26	.545
Utah State	114	1032	494	507	31	.494

## LONGEST TEAM STREAKS

## WINNING STREAK

23	Louisiana Tech, 1973-74
20	Texas State, 1981-83
16	New Mexico State, 1959-61
13	San Jose State, 1937-38; 1939
13	Utah State, 1906-08
9	Idaho, 1988; 1989
1	UTSA, 2011

## UNBEATEN STREAK

23	Louisiana Tech, 1973-74
20	Texas State, 1981-83
16	New Mexico State, 1959-61
13	San Jose State, 1937-38; 1939
13	Utah State, 1906-08
9	Idaho, 1988; 1989
1	UTSA, 2011

## LOSING STREAK

27	New Mexico State, 1988-90
16	Utah State, 2006-07
11	Idaho, 1945-46; 1953-54
10	San Jose State, 1922-23; 2010
8	Texas State, 1938
7	Louisiana Tech, 1966; 1970
3	UTSA, 2011

## ALL-TIME WAC OVERTIME GAMES

## 1996

Aug. 31 **Oregon** 30, at Fresno St. 27 (1)  
 Sept. 7 Wyoming 41, at Iowa St. 38 (1)  
 Oct. 19 **Air Force** 20, at Notre Dame 17 (1)  
 Nov. 16 \***Air Force** 44, at Fresno St. 38 (1)  
 Dec. 7 #**BYU** 28, Wyoming 25 (1)

## 1997

Sept. 20 at **Oregon** 43, Fresno St. 40 (1)  
 Sept. 27 \***BYU** 19, at SMU 16 (1)  
 \*at **Air Force** 24, SDSU 18 (1)  
 Oct. 18 \*at **SDSU** 20, UNLV 17 (1)  
 Nov. 22 \***SJSU** 55, at **UNLV** 48 (1)  
**NE Louisiana** 23, at Hawai'i 20 (1)

## 1998

Sept. 5 \*at **Rice** 23, SMU 17 (1)  
 Sept. 12 at **New Mexico** 39, Utah St. 36 (3)  
 Sept. 26 Mississippi 48, at **SMU** 41 (1)  
 Oct. 3 at **TCU** 19, Vanderbilt 16 (2)  
 Oct. 17 \***SDSU** 36, at New Mexico 33 (1)  
 \***Wyoming** 28, at UNLV 25 (1)  
 Oct. 24 \*at **SDSU** 21, Utah 20 (1)  
 Nov. 7 \*at Utah 34, **UTEP** 27 (1)

## 1999

Oct. 2 \*at Fresno St. 26, **TCU** 19 (1)  
 Oct. 23 \*at **Fresno St.** 24, UTEP 23 (1)  
 Nov. 13 \*at **Hawai'i** 31, Fresno St. 24 (2)

## 2000

Sept. 2 at **Rice** 30, Houston 27 (1)

## 2001

Oct. 6 \*Hawai'i 38, at **SMU** 31 (1)  
 Oct. 13 **Fresno St.** 25, at Colo. St. 22 (1)  
 Oct. 20 at Auburn 48, **La. Tech** 41 (1)  
 Oct. 20 \*at **Rice** 33, Nevada 30 (1)  
 Oct. 27 \*at La. Tech 41, **Rice** 38 (1)

## 2002

None

## 2003

Sept. 13 at Duke 27, **Rice** 24 (1)  
 Dec. 25 %at Hawai'i 54, **Houston** 48 (3)

## 2004

Sept. 4 Florida Atlantic 35, at **Hawai'i** 28 (1)  
 Oct. 23 \*at Nevada 54, **Tulsa** 48 (3)  
 Nov. 6 \*at **SMU** 41, Tulsa 35 (1)  
 Nov. 13 \***Boise St.** 56, at SJSU 49 (2)  
 Nov. 13 \*at **UTEP** 35, Rice 28 (2)  
 Dec. 27 \$**Fresno St.** 37, Virginia 34 (1)

## 2005

Oct. 29 \*Idaho 38, at **New Mexico St.** 37 (2)  
 Dec. 24 %Nevada 49, **Central Fla.** 48 (1)

## 2006

Jan. 1 @**Boise St.** 43, Oklahoma 42 (1)

## 2007

Sept. 8 at Texas A&M 47, **Fresno St.** 35 (3)  
 Sept. 8 \*Hawai'i 45, at **Louisiana Tech** 44 (1)  
 Oct. 12 \*Hawai'i 42, at **San Jose St.** 35 (1)  
 Oct. 14 \*at **Boise St.** 69, Nevada 67 (4)

## 2008

Sept. 20 **Fresno St.** 55, at Toledo 54 (2)  
 Oct. 4 \***Hawai'i** 32, at Fresno St. 29 (1)

## 2009

Sept. 12 at Wisconsin 34, **Fresno St.** 31 (2)  
 Nov. 21 \*Hawai'i 17, at **San Jose State** 10 (1)  
 Dec. 19 &**Wyoming** 35, Fresno St. 28 (2)

## 2010

Nov. 26 at **Nevada** 34, Boise St. 31 (1)  
 Dec. 4 at **Idaho** 26, San Jose St. 23 (1)

## 2011

Sept. 10 at **LA Tech** 48, Central Ark. 42 (1)  
 Sept. 24 at **Mississippi St.** 26, LA Tech 20 (1)  
 Sept. 24 **Colorado St.** 35, at Utah State 34 (2)  
 Oct. 1 at Virginia 21, **Idaho** 20 (1)  
 Nov. 19 **Utah State** 49, at Idaho 42 (2)

Boldface denotes coin toss winner

\*WAC Game

#1996 WAC Championship Game (Las Vegas)

%Hawai'i Bowl

\$MPC Computers Bowl

@Fiesta Bowl

&amp;New Mexico Bowl

# WAC STANDINGS

1962		WAC Games				All Games			
School	Coach	W-L-T	Pct.	Pts.	Opp.	W-L-T	Pct.	Pts.	Opp.
New Mexico	Bill Weeks	2-1-1	.625	67	80	7-2-1	.750	210	159
Wyoming	Lloyd Eaton	2-2-0	.500	75	54	5-5-0	.500	165	143
Brigham Young	Hal Mitchell	2-2-0	.500	82	69	4-6-0	.400	197	170
Arizona	Jim LaRue	2-2-0	.500	80	104	5-5-0	.500	134	171
Utah	Ray Nagel	1-2-1	.375	56	78	4-5-1	.450	169	196
Arizona State*	Frank Kush	1-1-0	.500	52	27	7-2-1	.750	304	126

\*Played fewer than qualifying number of games

1963		WAC Games				All Games			
School	Coach	W-L-T	Pct.	Pts.	Opp.	W-L-T	Pct.	Pts.	Opp.
New Mexico	Bill Weeks	3-1-0	.750	71	40	6-4-0	.600	177	143
Arizona	Jim LaRue	2-2-0	.500	69	71	5-5-0	.500	136	165
Utah	Ray Nagel	2-2-0	.500	79	69	4-6-0	.400	204	187
Wyoming	Lloyd Eaton	2-3-0	.400	86	104	6-4-0	.600	191	152
Brigham Young	Hal Mitchell	0-4-0	.000	27	115	2-8-0	.200	91	222
Arizona State*	Frank Kush	3-0-0	1.000	100	34	8-1-0	.889	249	122

\*Played fewer than qualifying number of games

1964		WAC Games				All Games			
School	Coach	W-L-T	Pct.	Pts.	Opp.	W-L-T	Pct.	Pts.	Opp.
Arizona	Jim LaRue	3-1-0	.750	91	29	6-3-1	.650	147	76
Utah	Ray Nagel	3-1-0	.750	92	30	9-2-0	.818	202	62
New Mexico	Bill Weeks	3-1-0	.750	53	43	9-2-0	.818	185	90
Wyoming	Lloyd Eaton	2-2-0	.500	58	56	6-2-2	.700	181	117
Brigham Young	Tommy Hudspeth	0-4-0	.000	44	143	3-6-1	.350	173	210
Arizona State*	Frank Kush	0-2-0	.000	9	46	8-2-0	.800	230	125

\*Played fewer than qualifying number of games

1965		WAC Games				All Games			
School	Coach	W-L-T	Pct.	Pts.	Opp.	W-L-T	Pct.	Pts.	Opp.
Brigham Young	Tommy Hudspeth	4-1-0	.800	117	71	6-4-0	.600	229	178
Arizona State	Frank Kush	3-1-0	.750	61	54	6-4-0	.600	132	142
Wyoming	Lloyd Eaton	3-2-0	.600	93	71	6-4-0	.600	201	182
New Mexico	Bill Weeks	2-3-0	.400	68	108	3-7-0	.300	127	226
Utah	Ray Nagel	1-3-0	.250	81	57	3-7-0	.300	177	164
Arizona	Jim LaRue	1-4-0	.200	27	86	3-7-0	.300	172	122

1966		WAC Games				All Games			
School	Coach	W-L-T	Pct.	Pts.	Opp.	W-L-T	Pct.	Pts.	Opp.
Wyoming	Lloyd Eaton	5-0-0	1.000	183	40	10-1-0	.909	355	89
Brigham Young	Tommy Hudspeth	3-2-0	.600	105	90	8-2-0	.800	269	163
Arizona State	Frank Kush	3-2-0	.600	70	75	5-5-0	.500	166	174
Utah	Mike Giddings	3-2-0	.600	92	100	5-5-0	.500	176	203
Arizona	Jim LaRue	1-4-0	.200	92	111	3-7-0	.300	192	250
New Mexico	Bill Weeks	0-5-0	.000	35	161	2-8-0	.200	101	320

1967		WAC Games				All Games			
School	Coach	W-L-T	Pct.	Pts.	Opp.	W-L-T	Pct.	Pts.	Opp.
Wyoming	Lloyd Eaton	5-0-0	1.000	147	46	10-1-0	.909	289	119
Arizona State	Frank Kush	4-1-0	.800	196	99	8-2-0	.800	350	210
Brigham Young	Tommy Hudspeth	3-2-0	.600	110	98	6-4-0	.600	278	215
Utah	Mike Giddings	2-3-0	.400	120	150	4-7-0	.364	204	252
Arizona	Darrell Mudra	1-4-0	.200	115	146	3-6-1	.350	162	231
New Mexico	Bill Weeks	0-5-0	.000	83	232	1-9-0	.100	152	433

1968		WAC Games				All Games			
School	Coach	W-L-T	Pct.	Pts.	Opp.	W-L-T	Pct.	Pts.	Opp.
Wyoming	Lloyd Eaton	6-1-0	.857	181	92	7-3-0	.700	242	118
Arizona State	Frank Kush	5-1-0	.833	243	116	8-2-0	.800	414	163
Arizona	Darrell Mudra	5-1-0	.833	99	63	8-3-0	.727	186	149
UTEP	Bobby Dobbs	3-3-0	.500	136	129	4-5-1	.450	232	225
Utah	Bill Meek	2-3-0	.400	105	123	3-7-0	.300	162	234
Colorado State	Mike Lude	1-4-0	.200	67	156	2-8-0	.200	133	262
Brigham Young	Tommy Hudspeth	1-5-0	.167	113	153	2-8-0	.200	179	247
New Mexico	Rudy Feldman	0-7-0	.000	84	247	0-10-0	.000	120	403

1969		WAC Games				All Games			
School	Coach	W-L-T	Pct.	Pts.	Opp.	W-L-T	Pct.	Pts.	Opp.
Arizona State	Frank Kush	6-1-0	.875	283	112	8-2-0	.800	383	179
Utah	Bill Meek	5-1-0	.833	138	62	8-2-0	.800	231	107
Brigham Young	Tommy Hudspeth	4-3-0	.571	144	142	6-4-0	.600	186	158
Wyoming	Lloyd Eaton	4-3-0	.571	175	114	6-4-0	.600	232	187
Arizona	Bob Weber	3-3-0	.500	147	146	3-7-0	.300	210	276
UTEP	Bobby Dobbs	2-5-0	.286	89	181	4-6-0	.400	158	242
New Mexico	Rudy Feldman	1-5-0	.167	90	198	4-6-0	.400	171	281
Colorado State	Mike Lude	0-4-0	.000	46	157	4-6-0	.400	218	288

1970		WAC Games				All Games			
School	Coach	W-L-T	Pct.	Pts.	Opp.	W-L-T	Pct.	Pts.	Opp.
Arizona State	Frank Kush	7-0-0	1.000	239	69	11-0-0	1.000	405	152
New Mexico	Rudy Feldman	5-1-0	.833	193	99	7-3-0	.700	291	222
Utah	Bill Meek	4-2-0	.667	144	120	6-4-0	.600	208	176
UTEP	Bobby Dobbs	4-3-0	.571	187	182	6-4-0	.600	263	236
Arizona	Bob Weber	2-4-0	.333	92	131	4-6-0	.400	168	213
Colorado State	Jerry Wampfler	1-3-0	.250	78	104	4-7-0	.364	206	256
Brigham Young	Tommy Hudspeth	1-6-0	.143	73	162	3-8-0	.273	138	255
Wyoming	Lloyd Eaton	1-6-0	.143	64	203	1-9-0	.100	110	310

1971		WAC Games				All Games			
School	Coach	W-L-T	Pct.	Pts.	Opp.	W-L-T	Pct.	Pts.	Opp.
Arizona State	Frank Kush	7-0-0	1.000	287	88	11-1-0	.917	462	201
New Mexico	Rudy Feldman	5-1-0	.833	231	154	6-3-2	.636	341	292
Arizona	Bob Weber	3-3-0	.500	86	102	5-6-0	.455	191	232
Brigham Young	Tommy Hudspeth	3-4-0	.429	147	127	5-6-0	.455	227	199
Utah	Bill Meek	3-4-0	.429	170	182	3-8-0	.273	244	315
Wyoming	Fritz Shurmur	3-4-0	.429	117	173	5-6-0	.455	222	309
Colorado State	Jerry Wampfler	1-4-0	.200	60	162	3-8-0	.273	177	276
UTEP	Bobby Dobbs	1-6-0	.143	55	166	5-6-0	.455	166	217

1972		WAC Games				All Games			
School	Coach	W-L-T	Pct.	Pts.	Opp.	W-L-T	Pct.	Pts.	Opp.
Arizona State	Frank Kush	5-1-0	.833	304	152	10-2-0	.833	513	261
Brigham Young	LaVell Edwards	5-2-0	.714	159	120	7-4-0	.636	251	227
Utah	Bill Meek	5-2-0	.714	270	178	6-5-0	.546	354	336
Arizona	Bob Weber	4-3-0	.571	172	132	4-7-0	.363	226	271
Wyoming	Fritz Shurmur	3-4-0	.428	142	163	4-7-0	.363	223	309
New Mexico	Rudy Feldman	2-4-0	.333	116	188	3-8-0	.273	208	327
Colorado State	Jerry Wampfler	1-4-0	.200	88	173	1-10-0	.091	128	413
UTEP <sup>1</sup>	Bobby Dobbs	1-6-0	.143	119	264	2-8-0	.200	182	345

<sup>1</sup>Tommy Hudspeth coached last four games

1973		WAC Games				All Games			
School	Coach	W-L-T	Pct.	Pts.	Opp.	W-L-T	Pct.	Pts.	Opp.
Arizona	Jim Young	6-1-0	.857	194	125	8-3-0	.736	286	213
Arizona State	Frank Kush	6-1-0	.857	373	118	11-1-0	.916	419	171
Utah	Bill Meek	4-2-0	.667	247	176	7-5-0	.583	385	344
Brigham Young	LaVell Edwards	3-4-0	.428	221	181	5-6-0	.454	337	245
New Mexico	Rudy Feldman	3-4-0	.428	196	215	4-7-0	.363	257	287
Wyoming	Fritz Shurmur	3-4-0	.428	151	173	4-7-0	.363	248	290
Colorado State	Sark Arslanian	2-4-0	.333	127	200	5-6-0	.454	250	333
UTEP	Tommy Hudspeth	0-7-0	.000	69	390	0-11-0	.000	142	544

1974		WAC Games				All Games			
School	Coach	W-L-T	Pct.	Pts.	Opp.	W-L-T	Pct.	Pts.	Opp.
Brigham Young	LaVell Edwards	6-0-1	.929	258	115	7-4-1	.625	303	199
Arizona	Jim Young	6-1-0	.857	176	103	9-2-0	.818	253	174
Arizona State	Frank Kush	4-3-0	.571	162	100	7-5-0	.583	269	163
New Mexico	Bill Mondt	3-4-0	.429	131	178	4-6-1	.409	192	263
UTEP	Gil Bartosh	3-4-0	.429	179	227	4-7-0	.364	246	298
Colorado State	Sark Arslanian	2-3-1	.417	165	155	4-6-1	.409	295	266
Utah	Tom Lovat	1-5-0	.167	69	198	1-10-0	.091	115	341
Wyoming	Fritz Shurmur	1-6-0	.143	102	166	2-9-0	.182	150	283

# WAC STANDINGS

1975		WAC Games				All Games			
School	Coach	W-L-T	Pct.	Pts.	Opp.	W-L-T	Pct.	Pts.	Opp.
Arizona State	Frank Kush	7-0-0	1.000	178	74	12-0-0	1.000	347	127
Arizona	Jim Young	5-2-0	.714	210	111	9-2-0	.818	330	169
Colorado State	Sark Arslanian	4-2-0	.667	84	114	6-5-0	.545	172	234
Brigham Young	LaVell Edwards	4-3-0	.571	157	142	6-5-0	.545	244	228
New Mexico	Bill Mondt	4-3-0	.571	173	151	6-5-0	.545	291	232
Utah	Tom Lovat	1-4-0	.200	87	169	1-10-0	.091	132	332
Wyoming	Fred Akers	1-6-0	.143	116	139	2-9-0	.181	174	219
UTEP	Gil Bartosh	0-6-0	.000	50	155	1-10-0	.091	109	281

1976		WAC Games				All Games			
School	Coach	W-L-T	Pct.	Pts.	Opp.	W-L-T	Pct.	Pts.	Opp.
Brigham Young	LaVell Edwards	6-1-0	.857	232	136	9-3-0	.750	372	231
Wyoming	Fred Akers	6-1-0	.857	172	137	8-4-0	.667	278	250
Arizona State	Frank Kush	4-3-0	.571	161	137	4-7-0	.364	223	243
Utah	Tom Lovat	3-3-0	.500	172	190	3-8-0	.273	245	361
Arizona	Jim Young	3-4-0	.428	189	150	5-6-0	.454	283	273
New Mexico	Bill Mondt	3-4-0	.428	156	152	4-7-0	.364	229	235
Colorado State	Sark Arslanian	2-4-0	.333	110	142	6-5-0	.545	205	186
UTEP	Gil Bartosh	0-7-0	.000	83	231	1-11-0	.083	162	356

1977		WAC Games				All Games			
School	Coach	W-L-T	Pct.	Pts.	Opp.	W-L-T	Pct.	Pts.	Opp.
Arizona State	Frank Kush	6-1-0	.857	264	91	9-3-0	.750	369	154
Brigham Young	LaVell Edwards	6-1-0	.857	280	108	9-2-0	.818	433	165
Colorado State	Sark Arslanian	5-2-0	.714	188	163	9-2-1	.792	310	223
Wyoming	Bill Lewis	4-3-0	.571	112	141	4-6-1	.409	166	173
Arizona	Tony Mason	3-4-0	.428	148	159	5-7-0	.417	256	250
New Mexico	Bill Mondt	2-5-0	.286	160	192	5-7-0	.417	273	212
Utah	Wayne Howard	2-5-0	.286	123	245	3-8-0	.273	212	379
UTEP	Bill Michael	0-7-0	.000	128	304	1-10-0	.091	166	469

1978		WAC Games				All Games			
School	Coach	W-L-T	Pct.	Pts.	Opp.	W-L-T	Pct.	Pts.	Opp.
Brigham Young	LaVell Edwards	5-1-0	.833	194	69	9-4-0	.750	304	176
Utah	Wayne Howard	4-2-0	.667	144	104	8-3-0	.727	291	182
Wyoming	Bill Lewis	4-2-0	.667	158	134	5-7-0	.417	253	245
New Mexico	Bill Mondt	3-3-0	.500	126	107	7-5-0	.583	284	205
Colorado State	Sark Arslanian	2-4-0	.333	111	153	5-6-0	.454	238	247
San Diego State	Claude Gilbert	2-4-0	.333	128	158	4-7-0	.364	242	257
UTEP	Bill Michael	1-5-0	.167	81	217	1-11-0	.083	151	424

1979		WAC Games				All Games			
School	Coach	W-L-T	Pct.	Pts.	Opp.	W-L-T	Pct.	Pts.	Opp.
Brigham Young	LaVell Edwards	7-0-0	1.000	302	64	11-1-0	.917	484	163
San Diego State	Claude Gilbert	5-2-0	.714	184	171	8-3-0	.727	286	276
Utah	Wayne Howard	5-2-0	.714	146	104	6-6-0	.500	267	296
Hawai'i	Dick Tomey	3-4-0	.428	153	159	6-5-0	.545	330	213
New Mexico	Bill Mondt	3-4-0	.428	85	152	6-6-0	.500	211	229
Colorado State	Sark Arslanian	3-4-0	.428	116	121	4-7-1	.375	177	241
Wyoming	Bill Lewis	2-5-0	.286	112	162	4-8-0	.333	185	276
UTEP	Bill Michael	0-7-0	.000	45	195	2-9-0	.182	106	266

1980		WAC Games				All Games			
School	Coach	W-L-T	Pct.	Pts.	Opp.	W-L-T	Pct.	Pts.	Opp.
Brigham Young	LaVell Edwards	6-1-0	.857	326	87	12-1-0	.923	606	243
Colorado State	Sark Arslanian	5-1-1	.786	178	140	6-4-1	.591	232	330
Hawai'i	Dick Tomey	4-3-0	.571	147	164	8-3-0	.727	260	212
Utah	Wayne Howard	3-3-1	.500	193	179	5-5-1	.500	259	315
Wyoming	Pat Dye	4-4-0	.500	225	186	6-5-0	.545	316	243
San Diego State	Claude Gilbert	4-4-0	.500	119	185	4-8-0	.333	163	294
New Mexico	Joe Morrison	3-4-0	.428	154	198	4-7-0	.364	246	364
Air Force	Ken Hatfield	1-6-0	.143	70	162	2-9-1	.208	161	290
UTEP	Bill Michael	1-6-0	.143	90	267	1-11-0	.083	143	424

1981		WAC Games				All Games			
School	Coach	W-L-T	Pct.	Pts.	Opp.	W-L-T	Pct.	Pts.	Opp.
Brigham Young	LaVell Edwards	7-1-0	.875	320	121	11-2-0	.846	503	256
Hawai'i	Dick Tomey	6-1-0	.857	219	79	9-2-0	.818	328	130
Utah	Wayne Howard	5-1-1	.786	213	155	8-2-1	.773	321	205
Wyoming	Al Kincaid	6-2-0	.750	241	132	8-3-0	.727	344	203
New Mexico	Joe Morrison	3-4-1	.437	135	120	4-7-1	.375	225	231
San Diego State	Doug Scovil	3-5-0	.375	166	160	6-5-0	.545	279	227
Air Force	Ken Hatfield	2-5-0	.285	124	174	4-7-0	.363	171	252
UTEP <sup>1</sup>	Bill Michael	1-6-0	.143	89	315	1-10-0	.091	146	441
Colorado State <sup>2</sup>	Sark Arslanian	0-8-0	.000	127	322	0-12-0	.000	164	502

<sup>1</sup>Bill Alton coached last nine games  
<sup>2</sup>Chester Caddas coached last six games

1982		WAC Games				All Games			
School	Coach	W-L-T	Pct.	Pts.	Opp.	W-L-T	Pct.	Pts.	Opp.
Brigham Young	LaVell Edwards	7-1-0	.875	300	130	8-4-0	.667	375	214
New Mexico	Joe Morrison	6-1-0	.857	225	173	10-1-0	.909	374	225
Air Force	Ken Hatfield	4-3-0	.571	231	226	8-5-0	.617	359	339
San Diego State	Doug Scovil	4-3-0	.571	171	200	7-5-0	.583	308	320
Hawai'i	Dick Tomey	4-4-0	.500	175	190	6-5-0	.545	240	230
Utah	Chuck Stobart	3-4-0	.428	153	122	5-6-0	.454	247	188
Colorado State	Leon Fuller	3-5-0	.375	147	186	4-7-0	.364	220	267
Wyoming	Al Kincaid	2-6-0	.250	167	203	5-7-0	.417	267	280
UTEP	Bill Yung	1-6-0	.143	120	249	2-10-0	.167	177	417

1983		WAC Games				All Games			
School	Coach	W-L-T	Pct.	Pts.	Opp.	W-L-T	Pct.	Pts.	Opp.
Brigham Young	LaVell Edwards	7-0-0	1.000	310	93	11-1-0	.917	505	247
Air Force	Ken Hatfield	5-2-0	.714	222	146	10-2-0	.833	367	221
Wyoming	Al Kincaid	5-3-0	.625	203	202	7-5-0	.583	331	327
New Mexico	Joe Lee Dunn	4-3-0	.571	164	147	6-6-0	.500	239	233
Hawai'i	Dick Tomey	3-3-1	.500	175	190	5-5-1	.500	251	236
Utah	Chuck Stobart	4-4-0	.500	232	210	5-6-0	.454	296	289
Colorado State	Leon Fuller	4-4-0	.500	140	216	5-7-0	.417	222	340
San Diego State	Doug Scovil	1-6-1	.187	161	256	2-9-1	.208	221	352
UTEP	Bill Yung	0-8-0	.000	134	284	2-10-0	.167	210	359

1984		WAC Games				All Games			
School	Coach	W-L-T	Pct.	Pts.	Opp.	W-L-T	Pct.	Pts.	Opp.
Brigham Young	LaVell Edwards	8-0-0	1.000	289	111	13-0-0	1.000	456	183
Hawai'i	Dick Tomey	5-2-0	.714	155	116	7-4-0	.636	217	181
Air Force	Fisher DeBerry	4-3-0	.571	209	131	8-4-0	.667	369	198
Utah	Chuck Stobart	4-3-1	.562	213	158	6-5-1	.542	347	253
San Diego State	Doug Scovil	4-3-1	.562	203	165	4-7-1	.375	265	250
Wyoming	Al Kincaid	4-4-0	.500	237	217	6-6-0	.500	334	442
Colorado State	Leon Fuller	3-5-0	.375	185	267	3-8-0	.273	230	260
New Mexico	Joe Lee Dunn	1-7-0	.125	132	276	4-8-0	.333	251	359
UTEP	Bill Yung	1-7-0	.125	131	313	2-9-0	.182	180	374

1985		WAC Games				All Games			
School	Coach	W-L-T	Pct.	Pts.	Opp.	W-L-T	Pct.	Pts.	Opp.
Air Force	Fisher DeBerry	7-1-0	.875	297	117	12-1-0	.923	469	179
Brigham Young	LaVell Edwards	7-1-0	.875	282	108	11-3-0	.786	442	186
Utah	Jim Fassel	5-3-0	.625	280	248	8-4-0	.667	405	339
Hawai'i	Dick Tomey	4-3-1	.563	173	148	4-6-2	.417	269	262
Colorado State	Leon Fuller	4-4-0	.500	200	249	5-7-0	.417	251	330
San Diego State	Doug Scovil	3-4-1	.438	214	198	5-6-1	.458	342	317
New Mexico	Joe Lee Dunn	2-6-0	.250	217	318	3-8-0	.273	289	415
Wyoming	Al Kincaid	2-6-0	.250	144	283	3-8-0	.273	210	371
UTEP	Bill Yung	1-7-0	.125	129	267	1-10-0	.091	196	375

# WAC STANDINGS

1986		WAC Games				All Games			
School	Coach	W-L-T	Pct.	Pts.	Opp.	W-L-T	Pct.	Pts.	Opp.
San Diego State	Denny Stolz	7-1-0	.875	203	154	8-4-0	.667	292	279
Brigham Young	LaVell Edwards	6-2-0	.750	193	126	8-5-0	.615	310	236
Air Force	Fisher DeBerry	5-2-0	.714	158	136	6-5-0	.545	229	215
Hawai'i	Dick Tomey	4-4-0	.500	158	163	7-5-0	.583	237	235
Colorado State	Leon Fuller	4-4-0	.500	187	179	6-5-0	.545	266	237
Wyoming	Dennis Erickson	4-4-0	.500	217	188	6-6-0	.500	299	272
New Mexico	Joe Lee Dunn	2-5-0	.286	197	228	4-8-0	.333	317	338
UTEP	Bob Stull	2-6-0	.250	175	234	4-8-0	.333	309	391
Utah	Jim Fassel	1-7-0	.125	238	318	2-9-0	.182	278	444

1987		WAC Games				All Games			
School	Coach	W-L-T	Pct.	Pts.	Opp.	W-L-T	Pct.	Pts.	Opp.
Wyoming	Paul Roach	8-0-0	1.000	279	121	10-3-0	.769	426	271
Brigham Young	LaVell Edwards	7-1-0	.875	238	170	9-4-0	.692	350	293
Air Force	Fisher DeBerry	6-2-0	.750	292	168	9-4-0	.692	405	269
UTEP	Bob Stull	5-3-0	.625	224	185	7-4-0	.636	309	234
San Diego State	Denny Stolz	4-4-0	.500	231	270	5-7-0	.417	357	428
Hawai'i	Bob Wagner	3-5-0	.375	204	223	5-7-0	.417	337	299
Utah	Jim Fassel	2-6-0	.250	172	250	5-7-0	.417	321	362
Colorado State	Leon Fuller	1-7-0	.125	174	224	1-11-0	.083	245	372
New Mexico	Mike Sheppard	0-8-0	.000	161	364	0-11-0	.000	209	444

1988		WAC Games				All Games			
School	Coach	W-L-T	Pct.	Pts.	Opp.	W-L-T	Pct.	Pts.	Opp.
Wyoming	Paul Roach	8-0-0	1.000	370	153	11-2-0	.846	511	280
UTEP	Bob Stull	6-2-0	.750	273	180	10-3-0	.769	445	275
Hawai'i	Bob Wagner	5-3-0	.625	245	184	9-3-0	.750	383	283
Brigham Young	LaVell Edwards	5-3-0	.625	268	196	9-4-0	.692	421	281
Utah	Jim Fassel	4-4-0	.500	292	285	6-5-0	.545	399	357
Air Force	Fisher DeBerry	3-5-0	.375	298	272	5-7-0	.417	422	392
San Diego State	Denny Stolz	3-5-0	.375	175	260	3-8-0	.273	204	384
New Mexico	Mike Sheppard	1-7-0	.125	85	339	2-10-0	.167	170	518
Colorado State	Leon Fuller	1-7-0	.125	124	261	1-10-0	.091	192	348

1989		WAC Games				All Games			
School	Coach	W-L-T	Pct.	Pts.	Opp.	W-L-T	Pct.	Pts.	Opp.
Brigham Young	LaVell Edwards	7-1-0	.875	327	212	10-3-0	.769	523	369
Air Force	Fisher DeBerry	5-1-1	.786	298	207	8-4-1	.654	475	358
Hawai'i	Bob Wagner	5-2-1	.688	306	165	9-3-1	.731	470	281
Wyoming	Paul Roach	5-3-0	.625	230	215	5-6-0	.455	281	299
San Diego State	Al Luginbill	4-3-0	.571	231	231	6-5-1	.542	368	378
Colorado State	Earle Bruce	4-3-0	.571	239	193	5-5-1	.500	350	304
Utah	Jim Fassel	2-6-0	.250	241	396	4-8-0	.333	365	524
UTEP	David Lee	1-7-0	.125	169	302	2-10-0	.167	238	412
New Mexico	Mike Sheppard	0-7-0	.000	134	254	2-10-0	.167	298	378

1990		WAC Games				All Games			
School	Coach	W-L-T	Pct.	Pts.	Opp.	W-L-T	Pct.	Pts.	Opp.
Brigham Young	LaVell Edwards	7-1-0	.875	371	186	10-3-0	.769	524	350
Colorado State	Earle Bruce	6-1-0	.857	198	160	9-4-0	.692	372	302
San Diego State	Al Luginbill	5-2-0	.714	341	249	6-5-0	.545	459	386
Wyoming	Paul Roach	5-3-0	.625	185	205	9-4-0	.692	327	297
Hawai'i	Bob Wagner	4-4-0	.500	237	181	7-5-0	.583	374	257
Air Force	Fisher DeBerry	3-4-0	.429	163	198	7-5-0	.583	262	283
Utah	Ron McBride	2-6-0	.250	153	282	4-7-0	.364	214	342
New Mexico	Mike Sheppard	1-6-0	.143	185	267	2-10-0	.167	279	400
UTEP	David Lee	1-7-0	.125	147	252	3-8-0	.273	191	342

1991		WAC Games				All Games			
School	Coach	W-L-T	Pct.	Pts.	Opp.	W-L-T	Pct.	Pts.	Opp.
Brigham Young	LaVell Edwards	7-0-1	.938	324	194	8-3-2	.692	433	321
San Diego State	Al Luginbill	6-1-1	.813	275	214	8-4-1	.654	420	465
Air Force	Fisher DeBerry	6-2-0	.750	210	183	10-3-0	.769	382	263
Utah	Ron McBride	4-4-0	.500	203	222	7-5-0	.583	276	277
Hawai'i	Bob Wagner	3-5-0	.375	218	231	4-7-1	.375	335	388
Wyoming	Joe Tiller	2-5-1	.313	242	295	4-6-1	.409	305	357
UTEP	David Lee	2-5-1	.313	194	183	4-7-1	.375	254	252
Colorado State	Earle Bruce	2-6-0	.250	206	241	3-8-0	.273	265	375
New Mexico	Mike Sheppard	2-6-0	.250	177	286	3-9-0	.250	240	473

1992		WAC Games				All Games			
School	Coach	W-L-T	Pct.	Pts.	Opp.	W-L-T	Pct.	Pts.	Opp.
Hawai'i	Bob Wagner	6-2-0	.750	241	228	11-2-0	.846	421	317
Fresno State	Jim Sweeney	6-2-0	.750	323	237	9-4-0	.692	510	364
Brigham Young	LaVell Edwards	6-2-0	.750	269	190	8-5-0	.615	375	298
San Diego State	Al Luginbill	5-3-0	.625	279	209	5-5-1	.500	334	338
Air Force	Fisher DeBerry	4-4-0	.500	174	185	7-5-0	.583	229	338
Utah	Ron McBride	4-4-0	.500	174	182	6-6-0	.500	320	289
Wyoming	Joe Tiller	3-5-0	.375	195	236	5-7-0	.417	302	341
Colorado State	Earle Bruce	3-5-0	.375	178	222	5-7-0	.417	281	334
New Mexico	Dennis Franchione	2-6-0	.250	171	218	3-8-0	.273	247	287
UTEP	David Lee	1-7-0	.125	174	289	1-10-0	.091	254	386

1993		WAC Games				All Games			
School	Coach	W-L-T	Pct.	Pts.	Opp.	W-L-T	Pct.	Pts.	Opp.
Fresno State	Jim Sweeney	6-2-0	.750	320	223	8-4-0	.667	467	350
Wyoming	Joe Tiller	6-2-0	.750	243	183	8-4-0	.667	357	329
Brigham Young	LaVell Edwards	6-2-0	.750	300	236	6-6-0	.500	411	435
Utah	Ron McBride	5-3-0	.625	280	257	7-6-0	.538	390	396
Colorado State	Sonny Lubick	5-3-0	.625	202	173	5-6-0	.455	230	268
New Mexico	Dennis Franchione	4-4-0	.500	220	201	6-5-0	.545	335	256
San Diego State	Al Luginbill	4-4-0	.500	293	281	6-6-0	.500	413	392
Hawai'i	Bob Wagner	3-5-0	.375	235	267	6-6-0	.500	393	357
Air Force	Fisher DeBerry	1-7-0	.125	149	236	4-8-0	.333	296	291
UTEP <sup>1</sup>	David Lee	0-8-0	.000	120	325	1-11-0	.083	220	449

<sup>1</sup>Charlie Bailey coached last five games

1994		WAC Games				All Games			
School	Coach	W-L-T	Pct.	Pts.	Opp.	W-L-T	Pct.	Pts.	Opp.
Colorado State	Sonny Lubick	7-1-0	.875	276	210	10-2-0	.833	400	269
Utah	Ron McBride	6-2-0	.750	278	164	10-2-0	.833	426	210
Brigham Young	LaVell Edwards	6-2-0	.750	260	228	10-3-0	.769	385	300
Air Force	Fisher DeBerry	6-2-0	.750	278	202	8-4-0	.667	371	285
Wyoming	Joe Tiller	4-4-0	.500	211	234	6-6-0	.500	319	341
New Mexico	Dennis Franchione	4-4-0	.500	254	240	5-7-0	.417	401	386
Fresno State	Jim Sweeney	3-4-1	.438	259	279	5-7-1	.423	376	426
San Diego State	Ted Tollner	2-6-0	.250	237	265	4-7-0	.364	332	339
UTEP	Charlie Bailey	1-6-1	.188	149	299	3-7-1	.318	217	359
Hawai'i	Bob Wagner	0-8-0	.000	137	218	3-8-1	.292	260	273

1995		WAC Games				All Games			
School	Coach	W-L-T	Pct.	Pts.	Opp.	W-L-T	Pct.	Pts.	Opp.
Colorado State	Sonny Lubick	6-2-0	.750	214	131	8-4-0	.667	339	254
Brigham Young	LaVell Edwards	6-2-0	.750	232	191	7-4-0	.636	308	268
Utah	Ron McBride	6-2-0	.750	216	156	7-4-0	.636	296	230
Air Force	Fisher DeBerry	6-2-0	.750	272	189	8-5-0	.615	401	358
San Diego State	Ted Tollner	5-3-0	.625	267	189	8-4-0	.667	401	283
Wyoming	Joe Tiller	4-4-0	.500	244	184	6-5-0	.545	322	264
Fresno State	Jim Sweeney	2-6-0	.250	229	274	5-7-0	.417	362	384
New Mexico	Dennis Franchione	2-6-0	.250	168	224	4-7-0	.364	256	303
Hawai'i	Bob Wagner	2-6-0	.250	145	295	4-8-0	.333	285	401
UTEP	Charlie Bailey	1-7-0	.125	164	334	2-10-0	.167	263	486

1996		WAC Games				All Games			
School	Coach	W-L	Pct.	Pts.	Opp.	W-L	Pct.	Pts.	Opp.
Wyoming	Joe Tiller	7-1	.875	316	152	10-2	.833	464	284
Colorado State	Sonny Lubick	6-2	.750	248	169	7-5	.583	380	336
San Diego State	Ted Tollner	6-2	.750	300	209	8-3	.727	428	303
Air Force	Fisher DeBerry	5-3	.625	316	171	6-5	.545	360	231
Fresno State	Jim Sweeney	3-5	.375	199	245	4-7	.364	267	344
San Jose State	John Ralston	3-5	.375	168	273	3-9	.250	221	448
Hawai'i	Fred vonAppen	1-7	.125	100	315	2-10	.167	161	433
UNLV	Jeff Horton	1-7	.125	211	320	1-11	.083	276	551

MOUNTAIN DIVISION		WAC Games				All Games			
School	Coach	W-L	Pct.	Pts.	Opp.	W-L	Pct.	Pts.	Opp.
Brigham Young	LaVell Edwards	8-0	1.000	319	117	14-1	.933	590	277
Rice	Ken Hatfield	6-2	.750	261	194	7-4	.636	296	312
Utah	Ron McBride	6-2	.750	224	199	8-4	.667	313	309
SMU	Tom Rossley	4-4	.500	180	211	5-6	.455	246	267
New Mexico	Dennis Franchione	3-5	.375	237	233	6-5	.545	331	280

## WAC STANDINGS

TCU	Pat Sullivan	3-5	.375	167	208	4-7	.364	211	302
Tulsa	Dave Rader	2-6	.250	178	259	4-7	.364	245	333
UTEP	Charlie Bailey	0-8	.000	129	278	2-9	.182	183	314

## 1997

## PACIFIC DIVISION

School	Coach	WAC Games				All Games			
		W-L	Pct.	Pts.	Opp.	W-L	Pct.	Pts.	Opp.
Colorado State	Sonny Lubick	7-1	.875	300	98	11-2	.846	442	179
Air Force	Fisher DeBerry	6-2	.750	201	129	10-3	.769	266	149
Fresno State	Pat Hill	5-3	.625	208	166	6-6	.500	318	288
Wyoming	Dana Dimel	4-4	.500	175	130	7-6	.538	322	227
San Diego State	Ted Tollner	4-4	.500	171	199	5-7	.417	257	333
San Jose State	Dave Baldwin	4-4	.500	191	277	4-7	.364	225	387
UNLV	Jeff Horton	2-6	.250	205	260	3-8	.273	281	332
Hawai'i	Fred vonAppen	1-7	.125	96	238	3-9	.250	189	308

## MOUNTAIN DIVISION

School	Coach	WAC Games				All Games			
		W-L	Pct.	Pts.	Opp.	W-L	Pct.	Pts.	Opp.
New Mexico	Dennis Franchione	6-2	.750	258	157	9-4	.692	390	254
Rice	Ken Hatfield	5-3	.625	205	189	7-4	.636	306	285
SMU	Mike Cavan	5-3	.625	185	159	6-5	.545	247	237
Utah	Ron McBride	5-3	.625	199	127	6-5	.545	253	200
Brigham Young	LaVell Edwards	4-4	.500	175	167	6-5	.545	250	254
UTEP	Charlie Bailey	3-5	.375	128	201	4-7	.364	162	311
Tulsa	Dave Rader	2-6	.250	197	297	2-9	.182	258	426
TCU	Pat Sullivan	1-7	.125	136	237	1-10	.091	172	325

## 1998

## PACIFIC DIVISION

School	Coach	WAC Games				All Games			
		W-L	Pct.	Pts.	Opp.	W-L	Pct.	Pts.	Opp.
Brigham Young	LaVell Edwards	7-1	.875	252	156	9-5	.643	402	290
San Diego State	Ted Tollner	7-1	.875	194	128	7-5	.583	243	244
Utah	Ron McBride	5-3	.625	246	168	7-4	.636	339	239
Fresno State	Pat Hill	5-3	.625	192	135	5-6	.455	265	225
San Jose State	Dave Baldwin	3-5	.375	201	235	4-8	.333	274	385
UTEP	Charlie Bailey	3-5	.375	173	204	3-8	.273	226	305
New Mexico	Rocky Long	1-7	.125	164	286	3-9	.250	274	397
Hawai'i	Fred vonAppen	0-8	.000	105	280	0-12	.000	149	422

## MOUNTAIN DIVISION

School	Coach	WAC Games				All Games			
		W-L	Pct.	Pts.	Opp.	W-L	Pct.	Pts.	Opp.
Air Force	Fisher DeBerry	7-1	.875	277	133	12-1	.923	468	185
Wyoming	Dana Dimel	6-2	.750	165	171	8-3	.727	222	215
Colorado State	Sonny Lubick	5-3	.625	226	163	8-4	.667	336	263
Rice	Ken Hatfield	5-3	.625	181	154	5-6	.455	235	257
TCU	Dennis Franchione	4-4	.500	180	169	7-5	.583	267	235
SMU	Mike Cavan	4-4	.500	122	114	5-7	.417	225	248
Tulsa	Dave Rader	2-6	.250	117	180	4-7	.364	222	258
UNLV	Jeff Horton	0-8	.000	122	265	0-11	.000	156	389

## 1999

School	Coach	WAC Games				All Games			
		W-L	Pct.	Pts.	Opp.	W-L	Pct.	Pts.	Opp.
Hawai'i	June Jones	5-2	.714	214	161	9-4	.692	371	349
TCU	Dennis Franchione	5-2	.714	245	123	8-4	.667	362	213
Fresno State	Pat Hill	5-2	.714	226	141	8-5	.615	413	282
Rice	Ken Hatfield	4-3	.571	198	161	5-6	.455	237	261
SMU	Mike Cavan	3-3	.500	107	113	4-6	.400	193	235
UTEP	Charlie Bailey	3-4	.429	183	235	5-7	.417	306	389
San Jose State	Dave Baldwin	1-5	.167	120	268	3-7	.300	258	402
Tulsa	Dave Rader	1-6	.143	129	220	2-9	.182	230	386

## 2000

School	Coach	WAC Games				All Games			
		W-L	Pct.	Pts.	Opp.	W-L	Pct.	Pts.	Opp.
TCU	Dennis Franchione	7-1	.875	293	89	10-2	.833	431	134
UTEP	Gary Nord	7-1	.875	283	167	8-4	.667	378	336
Fresno State	Pat Hill	6-2	.750	235	144	7-5	.583	314	248
San Jose State	Dave Baldwin	5-3	.625	250	240	7-5	.583	374	357
Tulsa	Keith Burns	4-4	.500	155	165	5-7	.417	240	283
Hawai'i	June Jones	2-6	.250	197	276	3-9	.250	294	399
Rice	Ken Hatfield	2-6	.250	186	215	3-8	.273	237	322
SMU	Mike Cavan	2-6	.250	118	248	3-9	.250	181	352
Nevada	Chris Tormey	1-7	.125	144	317	2-10	.167	207	264

## 2001

School	Coach	WAC Games				All Games			
		W-L	Pct.	Pts.	Opp.	W-L	Pct.	Pts.	Opp.
Louisiana Tech	Jack Bicknell	7-1	.875	311	223	7-5	.583	382	341
Fresno State	Pat Hill	6-2	.750	330	191	11-3	.786	525	300
Boise State	Dan Hawkins	6-2	.750	307	184	8-4	.667	411	280
Hawai'i	June Jones	5-3	.625	277	180	9-3	.750	483	318
Rice	Ken Hatfield	5-3	.625	273	247	8-4	.667	333	335
SMU	Mike Cavan	4-4	.500	189	212	4-7	.364	226	295
Nevada	Chris Tormey	3-5	.375	249	317	3-8	.273	286	431
San Jose State	Fitz Hill	3-5	.375	241	295	3-9	.250	295	461
UTEP	Gary Nord	1-7	.125	170	326	2-9	.182	235	414
Tulsa	Keith Burns	0-8	.000	133	305	1-10	.091	191	387

## 2002

School	Coach	WAC Games				All Games			
		W-L	Pct.	Pts.	Opp.	W-L	Pct.	Pts.	Opp.
Boise State	Dan Hawkins	8-0	1.000	409	111	12-1	.923	593	240
Hawai'i	June Jones	7-1	.875	304	202	10-4	.714	502	389
Fresno State	Pat Hill	6-2	.750	236	204	9-5	.643	378	379
San Jose State	Fitz Hill	4-4	.500	262	271	6-7	.462	376	467
Nevada	Chris Tormey	4-4	.500	248	259	5-7	.417	331	371
Rice	Ken Hatfield	3-5	.375	216	235	4-7	.364	253	296
Louisiana Tech	Jack Bicknell	3-5	.375	248	277	4-8	.333	320	426
SMU	Phil Bennett	3-5	.375	164	247	3-9	.250	207	378
UTEP	Gary Nord	1-7	.125	147	305	2-10	.167	220	511
Tulsa	Keith Burns	1-7	.125	156	279	1-11	.083	233	417

## 2003

School	Coach	WAC Games				All Games			
		W-L	Pct.	Pts.	Opp.	W-L	Pct.	Pts.	Opp.
Boise State	Dan Hawkins	8-0	1.000	375	143	13-1	.929	602	239
Tulsa	Steve Kragthorpe	6-2	.750	272	193	8-5	.615	400	361
Fresno State	Pat Hill	6-2	.750	203	168	9-5	.643	322	317
Hawai'i	June Jones	5-3	.625	242	211	9-5	.643	486	427
Rice	Ken Hatfield	5-3	.625	292	217	5-7	.417	343	378
Nevada	Chris Tormey	4-4	.500	195	251	6-6	.500	282	338
Louisiana Tech	Jack Bicknell	3-5	.375	237	275	5-7	.417	310	394
San Jose State	Fitz Hill	2-6	.250	217	290	3-8	.273	259	386
UTEP	Gary Nord	1-7	.125	195	332	2-11	.154	288	498
SMU	Phil Bennett	0-8	.000	98	246	0-12	.000	134	386

## 2004

School	Coach	WAC Games				All Games			
		W-L	Pct.	Pts.	Opp.	W-L	Pct.	Pts.	Opp.
Boise State	Dan Hawkins	8-0	1.000	401	196	11-1	.917	587	308
UTEP	Mike Price	6-2	.750	315	227	8-4	.667	429	301
Fresno State	Pat Hill	5-3	.625	338	165	9-3	.750	482	253
Louisiana Tech	Jack Bicknell	5-3	.625	260	220	6-6	.500	308	382
Hawai'i	June Jones	4-4	.500	238	324	8-5	.615	467	499
Nevada	Chris Ault	3-5	.375	236	318	5-7	.417	356	413
Tulsa	Steve Kragthorpe	3-5	.375	272	303	4-8	.333	345	398
SMU	Phil Bennett	3-5	.375	182	290	3-8	.273	202	420
Rice	Ken Hatfield	2-6	.250	243	321	3-8	.273	279	377
San Jose State	Fitz Hill	1-7	.125	256	377	2-9	.182	312	469

## 2005

School	Coach	WAC Games				All Games			
		W-L	Pct.	Pts.	Opp.	W-L	Pct.	Pts.	Opp.
Nevada	Chris Ault	7-1	.875	297	224	9-3	.750	410	383
Boise State	Dan Hawkins	7-1	.875	339	178	9-4	.692	469	317
Louisiana Tech	Jack Bicknell	6-2	.750	259	192	7-4	.636	316	281
Fresno State	Pat Hill	6-2	.750	292	143	8-5	.615	491	292
Hawai'i	June Jones	4-4	.500	264	244	5-7	.417	368	428
San Jose State	Dick Tomey	2-6	.250	173	241	3-8	.273	248	357
Utah State	Brent Guy	2-6	.250	167	270	3-8	.273	208	360
Idaho	Nick Holt	2-6	.250	180	313	2-9	.182	243	419
New Mexico St.	Hal Mumme	0-8	.000	147	313	0-12	.000	198	465



# WAC STANDINGS

## 2006

School	Coach	WAC Games				All Games			
		W-L	Pct.	Pts.	Opp.	W-L	Pct.	Pts.	Opp.
Boise State	Chris Petersen	8-0	1.000	333	160	13-0	1.000	516	229
Hawai'i	June Jones	7-1	.875	438	196	11-3	.786	656	337
San Jose State	Dick Tomey	5-3	.625	192	172	9-4	.692	324	270
Nevada	Chris Ault	5-3	.625	260	142	8-5	.615	391	249
Fresno State	Pat Hill	4-4	.500	203	214	4-8	.333	276	339
Idaho	Dennis Erickson	3-5	.375	149	272	4-8	.333	203	417
New Mexico St.	Hal Mumme	2-6	.250	230	262	4-8	.333	374	369
Louisiana Tech	Jack Bicknell	1-7	.125	153	345	3-10	.231	242	542
Utah State	Brent Guy	1-7	.125	123	318	1-11	.083	130	462

## 2007

School	Coach	WAC Games				All Games			
		W-L	Pct.	Pts.	Opp.	W-L	Pct.	Pts.	Opp.
Hawai'i	June Jones	8-0	1.000	341	232	12-1	.923	564	331
Boise State	Chris Petersen	7-1	.875	385	179	10-3	.769	551	281
Fresno State	Pat Hill	6-2	.750	252	192	9-4	.692	427	351
Nevada	Chris Ault	4-4	.500	315	270	6-7	.462	435	418
Louisiana Tech	Derek Dooley	4-4	.500	199	237	5-7	.447	249	368
San Jose State	Dick Tomey	4-4	.500	194	222	5-7	.417	245	352
Utah State	Brent Guy	2-6	.250	192	263	2-10	.167	247	406
New Mexico St.	Hal Mumme	1-7	.125	174	317	4-9	.308	312	471
Idaho	Robb Akey	0-8	.000	165	305	1-11	.083	258	443

## 2008

School	Coach	WAC Games				All Games			
		W-L	Pct.	Pts.	Opp.	W-L	Pct.	Pts.	Opp.
Boise State	Chris Petersen	8-0	1.000	343	94	12-1	.923	489	164
Louisiana Tech	Derek Dooley	5-3	.625	233	215	8-5	.615	320	308
Nevada	Chris Ault	5-3	.625	320	234	7-6	.538	489	420
Hawai'i	Greg McMackin	5-3	.625	223	198	7-7	.500	345	404
Fresno State	Pat Hill	4-4	.500	225	259	7-6	.538	385	404
San Jose State	Dick Tomey	4-4	.500	154	181	6-6	.500	224	259
Utah State	Brent Guy	3-5	.375	223	231	3-9	.250	288	416
New Mexico St.	Hal Mumme	1-7	.125	156	293	3-9	.250	266	409
Idaho	Robb Akey	1-7	.125	148	320	2-10	.167	235	513

## 2009

School	Coach	WAC Games				All Games			
		W-L	Pct.	Pts.	Opp.	W-L	Pct.	Pts.	Opp.
Boise State	Chris Petersen	8-0	1.000	396	171	14-0	1.000	591	240
Nevada	Chris Ault	7-1	.875	383	197	8-5	.615	497	371
Fresno State	Pat Hill	6-2	.750	257	220	8-5	.615	440	369
Idaho	Robb Akey	4-4	.500	260	304	8-5	.615	425	468
Hawai'i	Greg McMackin	3-5	.375	166	241	6-7	.462	296	383
Louisiana Tech	Derek Dooley	3-5	.375	259	203	4-8	.333	350	309
Utah State	Gary Andersen	3-5	.375	232	266	4-8	.333	349	408
San Jose State	Dick Tomey	1-7	.125	79	259	3-10	.231	149	411
New Mexico St.	DeWayne Walker	1-7	.125	112	283	2-10	.167	165	414

## 2010

School	Coach	WAC Games				All Games			
		W-L	Pct.	Pts.	Opp.	W-L	Pct.	Pts.	Opp.
Nevada	Chris Ault	7-1	.875	331	187	13-1	.929	574	300
Boise State	Chris Petersen	7-1	.875	382	89	12-1	.923	586	166
Hawai'i	Greg McMackin	7-1	.875	314	159	10-4	.714	554	357
Fresno State	Pat Hill	5-3	.625	231	241	8-5	.615	377	390
Louisiana Tech	Sonny Dykes	4-4	.500	250	264	5-7	.417	321	368
Idaho	Robb Akey	3-5	.375	187	274	6-7	.462	346	368
Utah State	Gary Andersen	2-6	.250	164	300	4-8	.333	264	405
New Mexico St.	DeWayne Walker	1-7	.125	125	335	2-10	.167	188	474
San Jose State	Mike MacIntyre	0-8	.000	160	295	1-12	.077	209	451

## 2011

School	Coach	WAC Games				All Games			
		W-L	Pct.	Pts.	Opp.	W-L	Pct.	Pts.	Opp.
Louisiana Tech	Sonny Dykes	6-1	.857	221	141	8-5	.615	391	301
Utah State	Gary Andersen	5-2	.714	201	199	7-6	.538	437	363
Nevada	Chris Ault	5-2	.714	245	162	7-6	.538	412	327
Hawai'i	Greg McMackin	3-4	.429	212	203	6-7	.462	409	378
San Jose State	Mike MacIntyre	3-4	.429	193	196	5-7	.417	294	364
Fresno State	Pat Hill	3-4	.429	231	227	4-9	.308	371	457
New Mexico St.	DeWayne Walker	2-5	.286	192	264	4-9	.308	319	478
Idaho	Robb Akey	1-6	.143	150	253	2-10	.167	243	399

## DESIGNATED GAMES

(Non-conference games that counted in the WAC standings)

### 1981

Utah 69, \*UNLV 26  
Tulane 31, \*Air Force 13  
\*UNLV 24, Air Force 21  
\*Hawai'i 57, UNLV 21

### 1968

\*Texas Tech 43, Colorado State 13  
Air Force 31, \*Colorado State 0

### 1979

\*San Diego State 42, Arizona 10  
UNLV 48, \*Hawai'i 31

### 1982

Utah 24, \*UNLV 14

\*Home team

WAC team in italics

### 1980

Hawai'i 24, \*UNLV 19  
\*Washington 50, Air Force 7  
Boston College 23, \*Air Force 0  
\*Tulane 28, Air Force 7  
\*Utah 45, UNLV 29

## ALL-TIME ATTENDANCE

Year	G	Total	Avg.
1962	32	681,701	21,303
1963	31	644,047	20,776
1964	33	776,359	23,526
1965	33	750,914	22,755
1966	32	767,312	23,979
1967	32	820,382	25,637
1968	41	986,211	24,054
1969	41	993,745	24,238
1970	43	1,097,825	25,531
1971	42	1,019,746	24,280
1972	43	1,036,948	24,115
1973	45	1,091,627	24,258
1974	45	1,194,430	26,543
1975	43	1,139,320	26,496
1976	45	1,316,684	29,260
1977	44	1,277,788	29,041
1978	36	884,369	24,566
1979	47	1,356,397	28,860
1980	51	1,331,607	26,110
1981	47	1,450,090	30,853
1982	53	1,599,922	30,187
1983	52	1,552,745	29,860
1984	55	1,740,023	31,637
1985	55	1,744,123	31,711
1986	51	1,748,857	34,291
1987	54	1,927,572	35,696
1988	54	1,795,735	33,254
1989	55	1,844,999	33,545
1990	55	1,784,807	32,451
1991	55	1,883,861	34,252
1992	60	2,126,661	35,444
1993	61	2,109,752	34,586
1994	61	2,110,228	34,594
1995	63	2,067,331	32,815
1996	91	2,687,962	29,538
1997	89	2,688,331	30,206
1998	91	2,609,246	28,673
1999	44	1,241,292	28,211
2000	51	1,414,297	27,731
2001	56	1,384,215	24,718
2002	59	1,492,962	25,304
2003	61	1,531,736	25,110
2004	57	1,438,628	25,239
2005	50	1,070,857	21,417
2006	55	1,264,695	22,994
2007	54	1,242,782	23,014
2008	55	1,346,134	24,475
2009	53	1,205,690	22,749
2010	58	1,356,797	23,393
2011	47	959,117	20,407
<b>Totals</b>	<b>2,506</b>	<b>70,242,725</b>	<b>28,030</b>

# WAC AND THE NFL

## NFL DRAFT 1982-2011

### 1982

1-5	Jim McMahon, QB, BYU	Chicago
2-48	Matt Kofler, QB, San Diego St.	Buffalo
2-49	Vernon Dean, DB, San Diego St.	Washington
2-55	Darryl Haley, T, Utah	New England
3-71	Del Rodgers, RB, Utah	Green Bay
3-81	Jim Eliopoulos, LB, Wyoming	Dallas
4-106	Dan Plater, WR, BYU	Denver
5-130	Delbert Thompson, RB, UTEP	Kansas City
6-144	Jack Campbell, T, Utah	Seattle
6-148	Gary Allen, RB, Hawai'i	Houston
7-176	David Toloumu, RB, Hawai'i	Atlanta
7-183	Joey Whitley, DB, UTEP	Green Bay
8-199	Mark Kafentzis, DB, Hawai'i	Cleveland
9-239	Steve Clark, G, Utah	Miami
10-269	Dana McLemore, DB, Hawai'i	San Francisco
10-276	Wayne Jones, C, Utah	Miami
11-303	Gary Crum, T, Wyoming	Miami

### 1983

3-60	Clinton Sampson, WR, San Diego St.	Denver
3-79	Todd Seabaugh, LB, San Diego St.	Pittsburgh
4-85	Phil Smith, WR, San Diego St.	Baltimore
4-90	Tom Holmoe, DB, BYU	San Francisco
4-111	Doug Reed, DT, San Diego St.	L.A. Rams
6-153	Kevin Belcher, C, UTEP	N.Y. Giants
7-174	Anthony Edgar, RB, Hawai'i	Philadelphia
7-184	Carlos Scott, C, UTEP	St. Louis
9-225	Jim Mills, T, Hawai'i	Baltimore
10-264	James Williams, TE, Wyoming	New England
10-270	Darius Durham, WR, San Diego St.	Tampa Bay
11-289	Jesse Sapolu, C, Hawai'i	San Francisco
11-295	John Salley, DB, Wyoming	Atlanta
12-329	Chuck Ehin, NT, BYU	San Diego

### 1984

1-1	*Steve Young, QB, BYU	Tampa Bay
1-22	*Gordon Hudson, TE, BYU	Seattle
1-24	Todd Shell, LB, BYU	San Francisco
2-37	*Jim Sandusky, WR, San Diego St.	N.Y. Jets
2-52	Chris Kolodziejek, TE, Wyoming	Pittsburgh
3-60	*Thomas Carter, LB, San Diego St.	Philadelphia
3-79	Sean McNamee, DE, San Diego St.	Buffalo
3-81	*Jeff Speck, TE, San Diego St.	Dallas
5-127	Andy Parker, TE, Utah	L.A. Raiders
5-130	Kevin Call, T, Colorado St.	Indianapolis
6-158	Terry Nugent, QB, Colorado St.	Cleveland
7-192	Jimmie Carter, LB, New Mexico	Detroit
7-198	Derwin Williams, WR, New Mexico	New England
7-194	Bernard Carvalho, G, Hawai'i	Miami
8-201	Falaniko Noga, ILB, Hawai'i	St. Louis
11-300	Mike Saxon, P, San Diego St.	Detroit
11-307	Kirk Pendleton, WR, BYU	San Francisco

\*Supplemental draft

### 1985

1-28	Trevor Matich, C, BYU	New England
2-33	Tory Nixon, DB, San Diego St.	Washington
3-62	James Johnson, LB, San Diego St.	Detroit
3-71	Rich Moran, G, San Diego St.	Green Bay
4-91	Mike Smith, DB, UTEP	Miami
4-106	Kyle Morrell, DB, BYU	Minnesota
4-110	Keli McGregor, TE, Colorado St.	Denver
5-122	Raphael Cherry, DB, Hawai'i	Washington
5-131	Louis Wong, G, BYU	St. Louis
5-138	Lee Johnson, P, BYU	Houston
6-158	Jay Novacek, TE, Wyoming	St. Louis
6-166	Rich Miano, DB, Hawai'i	N.Y. Jets
7-170	Mike Akiu, WR, Hawai'i	Houston
7-184	Jim Herrmann, DE, BYU	Dallas
8-198	Nikita Blair, LB, UTEP	Minnesota
9-231	Dave Toub, C, UTEP	Philadelphia
9-235	Mike Waters, RB, San Diego St.	N.Y. Jets
10-269	Buddy Funck, QB, New Mexico	Denver
12-321	Harper LeBel, TE, Colorado St.	Kansas City

### 1986

2-43	Webster Slaughter, WR, San Diego St.	Cleveland
2-45	Walter Murray, WR, Hawai'i	Washington
3-66	Terry Unrein, DE, Colorado St.	San Diego
3-72	Robbie Bosco, QB, BYU	Green Bay
4-98	Dan Knight, T, San Diego St.	Green Bay
5-122	Erroll Tucker, CB, Utah	Pittsburgh
5-123	Leon White, OLB, BYU	Cincinnati
5-130	Vince Warren, WR, San Diego St.	N.Y. Giants
8-200	Filipo Mokofisi, LB, Utah	New Orleans
8-205	Allyn Griffin, WR, Wyoming	Detroit
8-208	Seth Joyner, LB, UTEP	Philadelphia
8-213	Kurt Gouveia, MLB, BYU	Washington
9-227	Kent Kafentzis, DB, Hawai'i	St. Louis
9-230	Cary Whittingham, LB, BYU	Cincinnati
9-238	Danny Taylor, DB, UTEP	Cleveland
9-245	Nuu Faaola, RB, Hawai'i	N.Y. Jets
10-254	Vai Sikahema, RB, BYU	St. Louis
10-256	Don Sommer, G, UTEP	Houston
11-305	Glen Kozlowski, WR, BYU	Chicago
12-320	Jeff Sprowls, DB, BYU	San Diego

### 1987

1-6	Kelly Stouffer, QB, Colorado St.	St. Louis
1-11	Shawn Knight, NT, BYU	New Orleans
1-17	Jason Buck, DE, BYU	Cincinnati
3-62	Robert Awalt, TE, San Diego St.	St. Louis
3-70	Colin Scotts, NT, Hawai'i	St. Louis
4-87	Ron Hall, TE, Hawai'i	Tampa Bay
6-143	Steve Bartalo, RB, Colorado St.	Tampa Bay
6-151	Joe Onosai, G, Hawai'i	Dallas
7-170	Mark Bellini, WR, BYU	Indianapolis
7-189	Steve DeLine, K, Colorado St.	San Francisco
8-199	Joe MacEsler, T, UTEP	San Diego
8-216	Sammy Garza, QB, UTEP	Seattle
9-243	M.I. Johnson, OLB, Hawai'i	Seattle
9-249	Lakei Heimuli, RB, BYU	Chicago

### 1988

3-71	Al Noga, DE, Hawai'i	Minnesota
5-126	Rodney Thomas, CB, BYU	Miami
6-165	Jeff Knapton, DT, Wyoming	L.A. Rams
7-193	Harold Hicks, DB, San Diego St.	Washington
9-246	Clarence Nunn, DB, San Diego St.	New Orleans
10-271	Marco Johnson, WR, Hawai'i	Houston
10-274	Todd Santos, QB, San Diego St.	New Orleans
11-290	Chad Hennings, DT, Air Force	Dallas
12-313	David Futrell, NT, BYU	N.Y. Giants
12-315	Wayne Ross, P, San Diego St.	Washington
12-319	Steve Kaufusi, DE, BYU	Philadelphia
12-326	Dave DesRochers, T, San Diego St.	Seattle

### 1989

2-43	Eric Coleman, CB, Wyoming	New England
3-80	John Hunter, T, BYU	Minnesota
4-85	Tony Tolbert, DE, UTEP	Dallas
5-128	David Edeen, DE, Wyoming	Phoenix
5-135	Alfred Jackson, DB, San Diego St.	L.A. Rams
6-142	Chris Jacke, K, UTEP	Green Bay
8-210	Rodney Rice, CB, BYU	New England
8-215	Warren Wheat, G, BYU	L.A. Rams
9-249	Pat Rabold, DT, Wyoming	Buffalo

### 1990

3-60	Leo Goeas, G, Hawai'i	San Diego
3-76	Mohammed Elewonibi, T, BYU	Washington
4-93	Scott Mitchell, QB, Utah	Miami
6-140	Terance Mathis, WR, New Mexico	N.Y. Jets
8-203	Roman Fortin, C, San Diego St.	Detroit
8-214	Craig Schlichting, DE, Wyoming	Minnesota
12-313	Robert Claiborne, WR, San Diego St.	Detroit

## FIRST-ROUND PICKS

### ARIZONA

1968	Bill Lueck, G, Green Bay (26)
1976	Mike Dawson, DT, St. Louis (22)

### ARIZONA STATE

1964	Charley Taylor, HB, Washington
1967	John Pitts, FL/DB, Buffalo (22)
1969	Ron Pritchard, LB, Houston (15)
1971	J.D. Hill, WR, Buffalo (4)
1973	Steve Holden, WR, Cleveland (16)
1974	Woody Green, HB, Kansas City (16)
1976	Mike Haynes, CB, New England (5)
1976	Larry Gordon, LB, Miami (17)
1978	John Jefferson, WR, San Diego (14)

### BOISE STATE

2008	Ryan Clady, OT, Denver (12)
2010	Kyle Wilson, CB, New York Jets (29)

### BRIGHAM YOUNG

1980	Marc Wilson, QB, Oakland (15)
1982	Jim McMahon, QB, Chicago (5)
1984	Todd Shell, LB, San Francisco (24)
1985	Trevor Matich, C, New England (28)
1987	Shawn Knight, DT, New Orleans (11)
1987	Jason Buck, DE, Cincinnati (17)
1999	John Tait, OL, Kansas City (14)

### COLORADO STATE

1975	Mark Mullaney, OT, Minnesota (25)
1976	Kevin McLain, LB, Los Angeles (26)
1979	Mike Bell, DL, Kansas City (2)
1987	Kelly Stouffer, QB, St. Louis (6)

### FRESNO STATE

1994	Trent Dilfer, QB, Tampa Bay (6)
2002	David Carr, QB, Houston (1)
2004	Logan Mankins, OL, New England (32)
2010	Ryan Mathews, RB, San Diego (12)

### HAWAII

2002	Ashley Lelie, WR, Denver (19)
------	-------------------------------

### IDAHO

2010	Mike Iupati, OG, San Francisco (17)
------	-------------------------------------

### NEW MEXICO

1977	Robin Cole, DT, Pittsburgh (21)
------	---------------------------------

### SAN DIEGO STATE

1991	Dan McGwire, QB, Seattle (16)
1994	Marshall Faulk, RB, Indianapolis (2)
1998	Kyle Turley, OL, New Orleans (7)

### TCU

2001	LaDainian Tomlinson, RB, San Diego (5)
------	--

### UTEP

1968	Fred Carr, LB, Green Bay (5)
1968	George Daney, DL, Kansas City (22)

### UTAH

1971	Norm Thompson, DB, St. Louis (17)
1995	Luther Elliss, DE, Detroit (20)
1998	Kevin Dyson, WR, Tennessee (16)

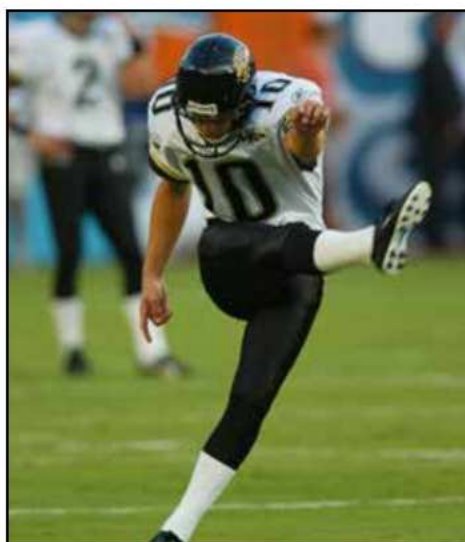
### WYOMING

1967	Ron Billingsley, DE, San Diego (14)
1976	Lawrence Gaines, RB, Detroit (16)
1976	Aaron Kyle, CB, Dallas (27)

# WAC AND THE NFL



**Jake Scott, OL**  
Tennessee Titans  
Idaho, 2000-03



**Josh Scobee, PK**  
Jacksonville Jaguars  
Louisiana Tech, 2000-03



**Tony Wragge, OL**  
St. Louis Rams  
New Mexico State, 1998-2000

Year	Player	Position	College	NFL Team	
<b>1991</b>	1-16 Dan McGwire, QB, San Diego St.	QB	San Diego St.	Seattle	
	3-58 Reggie Barrett, WR, UIEP	WR	UIEP	Detroit	
	4-85 Pio Sagapolutele, DI, San Diego St.	DI	San Diego St.	Cleveland	
	4-95 Mitch Donahue, ILB, Wyoming	ILB	Wyoming	San Francisco	
	6-142 Nick Subis, C, San Diego St.	C	San Diego St.	Denver	
	6-143 Neal Fort, I, BYU	I	BYU	L.A. Rams	
	7-172 Brian Mitchell, CB, BYU	CB	BYU	Atlanta	
	9-239 Shawn Wiggins, WR, Wyoming	WR	Wyoming	Cleveland	
	11-295 Chris Smith, IE, BYU	IE	BYU	Cincinnati	
	12-329 Ron Shipley, G, New Mexico	G	New Mexico	Kansas City	
	<b>1992</b>	2-52 Patrick Rowe, WR, San Diego St.	WR	San Diego St.	Cleveland
		6-160 Jeff Sydnor, WR, Hawai'i	WR	Hawai'i	Philadelphia
6-168 Ray Rowe, IE, San Diego St.		IE	San Diego St.	Washington	
7-177 Selwyn Jones, CB, Colorado St.		CB	Colorado St.	Cleveland	
8-213 Jim Jennings, G, San Diego St.		G	San Diego St.	Kansas City	
8-224 Darryl Moore, I, UIEP		I	UIEP	Washington	
9-230 Iy Detmer, QB, BYU		QB	BYU	Green Bay	
11-298 Doug Rigby, DE, Wyoming		DE	Wyoming	Kansas City	
11-301 Anthony Davis, OLB, Utah		OLB	Utah	Houston	
12-332 Joe Wood, K, Air Force		K	Air Force	Houston	
<b>1993</b>		3-70 Jason Elam, K, Hawai'i	K	Hawai'i	Denver
		3-80 Ed Bunn, P, UIEP	P	UIEP	Washington
	4-89 Lorenzo Neal, FB, Fresno St.	FB	Fresno St.	New Orleans	
	4-92 Derwin Gray, DB, BYU	DB	BYU	Indianapolis	
	8-209 Maa Ianuvasa, DI, Hawai'i	DI	Hawai'i	L.A. Rams	
	8-220 Darrick Branch, WR, Hawai'i	WR	Hawai'i	Tampa Bay	
	<b>1994</b>	1-2 Marshall Faulk, RB, San Diego St.	RB	San Diego St.	Indianapolis
		1-6 Trent Dilfer, QB, Fresno St.	QB	Fresno St.	Tampa Bay
		2-30 Darnay Scott, WR, San Diego St.	WR	San Diego St.	Cincinnati
		2-41 Ryan Yarborough, WR, Wyoming	WR	Wyoming	N.Y. Jets
		3-68 Iydyus Winans, WR, Fresno St.	WR	Fresno St.	Washington
		3-101 Malcolm Floyd, WR, Fresno St.	WR	Fresno St.	Houston
4-105 Kurt Haws, IE, Utah		IE	Utah	Washington	
4-122 Iaase Faumui, DE, Hawai'i		DE	Hawai'i	Pittsburgh	
5-151 James Burton, DB, Fresno St.		DB	Fresno St.	Kansas City	
6-185 Anthony Daigle, RB, Fresno St.		RB	Fresno St.	Kansas City	
6-194 Barron Wortham, MLB, UIEP		MLB	UIEP	Houston	
7-195 Ramondo Stallings, DE, San Diego St.		DE	San Diego St.	Cincinnati	
7-201 Jamal Anderson, RB, Utah	RB	Utah	Atlanta		
<b>1995</b>	1-20 Luther Elliss, DI, Utah	DI	Utah	Detroit	
	3-70 David Sloan, IE, New Mexico	IE	New Mexico	Detroit	
	<b>1996</b>	3-80 Stoney Case, QB, New Mexico	QB	New Mexico	Arizona
		3-87 Evan Pilgrim, G, BYU	G	BYU	Chicago
		4-127 Tim Hanshaw, G, BYU	G	BYU	San Francisco
		5-139 David Dunn, WR, Fresno St.	WR	Fresno St.	Cincinnati
		5-165 Lance Scott, C, Utah	C	Utah	Arizona
		5-169 Ryan Christopherson, RB, Wyoming	RB	Wyoming	Jacksonville
		6-181 Travis Hall, DE, BYU	DE	BYU	Atlanta
		6-190 Eli Herring, T, BYU	T	BYU	Oakland
		6-204 Jamal Duff, DE, San Diego St.	DE	San Diego St.	N.Y. Giants
		7-213 John Walsh, QB, BYU	QB	BYU	Cincinnati
7-218 Steve Russ, MLB, Air Force		MLB	Air Force	Denver	
7-219 Curt Marsh, WR, Utah		WR	Utah	Jacksonville	
7-239 Bronzell Miller, DE, Utah	DE	Utah	St. Louis		
7-245 John Burrough, DE, Wyoming	DE	Wyoming	Atlanta		
<b>1997</b>	3-70 Brady Smith, DE, Colorado St.	DE	Colorado St.	New Orleans	
	3-73 Winslow Oliver, RB, New Mexico	RB	New Mexico	Carolina	
	3-91 Reggie Brown, RB, Fresno St.	RB	Fresno St.	Seattle	
	3-95 Mike Ulufale, DT, BYU	DT	BYU	Dallas	
	4-114 Charlie Jones, WR, Fresno St.	WR	Fresno St.	San Diego	
	4-120 Sean Moran, DE, Colorado St.	DE	Colorado St.	Buffalo	
	4-132 Jahine Arnold, WR, Fresno St.	WR	Fresno St.	Pittsburgh	
	5-144 Greg Myers, S, Colorado St.	S	Colorado St.	Cincinnati	
	5-156 Raymond Jackson, CB, Colorado St.	CB	Colorado St.	Buffalo	
	5-166 La'Roi Glover, DT, San Diego St.	DT	San Diego St.	Oakland	
	6-173 Chris Griffin, TE, New Mexico	TE	New Mexico	New England	
	7-236 Brian Gragert, P, Wyoming	P	Wyoming	Denver	
7-246 Henry Lusk, TE, Utah	TE	Utah	New Orleans		
7-250 DeAndre Maxwell, WR, San Diego St.	WR	San Diego St.	Washington		
<b>1998</b>	2-53 Will Blackwell, WR, San Diego St.	WR	San Diego St.	Pittsburgh	
	3-83 Steve Scifres, T, Wyoming	T	Wyoming	Dallas	
	4-112 Ryan Tucker, T, TCU	T	TCU	St. Louis	
	5-150 Nate Jacquet, WR, San Diego St.	WR	San Diego St.	Indianapolis	
	5-152 Ndukwe Kalu, DE, Rice	DE	Rice	Philadelphia	
	5-154 George Jones, RB, San Diego St.	RB	San Diego St.	Pittsburgh	
	6-172 Calvin Branch, FS, Colorado St.	FS	Colorado St.	Oakland	
	6-174 Itula Mili, TE, BYU	TE	BYU	Seattle	
	6-178 Daniel Palmer, C, Air Force	C	Air Force	San Diego	
	6-179 Muadianvita Kazadi, LB, Tulsa	LB	Tulsa	St. Louis	
	6-187 Lee Vaughn, DB, Wyoming	DB	Wyoming	Dallas	
	6-201 Ricky Parker, DB, San Diego St.	DB	San Diego St.	Chicago	
7-222 Chris Bayne, DB, Fresno St.	DB	Fresno St.	Atlanta		
7-224 Omar Stoutmire, FS, Fresno St.	FS	Fresno St.	Dallas		
7-232 Marcus Harris, WR, Wyoming	WR	Wyoming	Detroit		
<b>1999</b>	1-14 John Tait, T, BYU	T	BYU	Kansas City	
	3-65 Cory Hall, SS, Fresno St.	SS	Fresno St.	Cincinnati	
	3-73 Joey Porter, OLB, Colorado St.	OLB	Colorado St.	Pittsburgh	
	3-88 Anthony Cesario, G, Colorado St.	G	Colorado St.	Jacksonville	
	3-90 David Loverne, G, San Jose St.	G	San Jose St.	N.Y. Jets	
	4-117 Donald Mitchell, CB, SMU	CB	SMU	Tennessee	
	5-160 Jason Craft, CB, Colorado St.	CB	Colorado St.	Jacksonville	
	6-180 Marcus Washington, S, Colorado St.	S	Colorado St.	New England	
	6-185 Talance Sawyer, DT, UNLV	DT	UNLV	Minnesota	
	6-186 Darran Hall, WR, Colorado St.	WR	Colorado St.	Tennessee	
	6-188 Daren Yancey, DT, BYU	DT	BYU	Oakland	
	6-189 Lyle West, SS, San Jose St.	SS	San Jose St.	N.Y. Giants	
6-190 Jacoby Rhinehart, CB, SMU	CB	SMU	Arizona		
7-222 Phil Glover, LB, Utah	LB	Utah	Tennessee		
7-244 Joe Wong, T, BYU	T	BYU	Miami		
7-248 Bryce Fisher, DE, Air Force	DE	Air Force	Buffalo		
<b>2000</b>	2-46 Adrian Klemm, G, Hawai'i	G	Hawai'i	New England	
	3-86 Jeff Ulbrich, ILB, Hawai'i	ILB	Hawai'i	San Francisco	
	4-104 Kaulana Noa, G, Hawai'i	G	Hawai'i	St. Louis	
	5-132 Paul Smith, FB, UTEP	FB	UTEP	San Francisco	
	5-139 Brian Young, DT, UTEP	DT	UTEP	St. Louis	
	5-145 Todd Franz, CB, Tulsa	CB	Tulsa	Detroit	
	6-194 Leif Larsen, DT, UTEP	DT	UTEP	Buffalo	
	<b>2001</b>	1-5 LaDainian Tomlinson, RB, TCU	RB	TCU	San Diego
		2-46 Aaron Schobel, DE, TCU	DE	TCU	Buffalo
		3-66 Sean Brewer, TE, San Jose St.	TE	San Jose St.	Cincinnati
		4-104 Orlando Huff, MLB, Fresno St.	MLB	Fresno St.	Seattle
		4-108 George Layne, RB, TCU	RB	TCU	Kansas City

# WAC AND THE NFL

4-127	Curtis Fuller, FS, ICU	Seattle
4-130	Shawn Worthen, NI, ICU	Minnesota
4-131	Cedric James, WR, ICU	Minnesota
6-191	Menson Holloway, DE, UIEP	San Francisco
7-219	Kynan Forney, G, Hawai'i	Atlanta

## 2002

1-1	David Carr, QB, Fresno St.	Houston
1-19	Ashley Lelie, WR, Hawai'i	Denver
4-121	Alan Harper, NI, Fresno St.	N.Y. Jets
5-140	Bobby Gray, SS, Louisiana Tech	Chicago
5-171	Matt Hill, I, Boise St.	Seattle
6-191	Jeb Putzier, IE, Boise St.	Denver
6-202	Lee Mays, WR, UIEP	Pittsburgh
7-221	Maurice Rodriguez, LB, Fresno St.	Kansas City
7-244	Kevin Shaffer, I, Iulsa	Atlanta
7-249	Rodney Wright, WR, Fresno St.	Buffalo

## 2003

2-43	Pisa Iinoisamoa, OLB, Hawai'i	St. Louis
3-71	Nate Burleson, WR, Nevada	Minnesota
3-72	Vincent Manuwai, G, Hawai'i	Jacksonville
3-73	Wayne Hunter, I, Hawai'i	Seattle
3-83	Sam Williams, DE, Fresno St.	Oakland
5-142	Ryan Pontbriand, C, Rice	Cleveland
5-172	Kevin Garrett, CB, SMU	St. Louis
6-176	Brandon Green, DE, Rice	Jacksonville
6-206	Brock Forsey, RB, Boise St.	Chicago
6-209	Tim Provost, I, San Jose St.	Miami

## 2004

2-42	Travis LaBoy, DL, Hawai'i	Tennessee
3-78	Bernard Berrian, WR, Fresno St.	Chicago
3-86	Jorge Cordova, DL, Nevada	Jacksonville
4-104	Isaac Sopoaga, DL, Hawai'i	San Francisco
4-106	Luke McCown, QB, Louisiana Tech	Cleveland
4-131	Trey Darilek, OL, UIEP	Philadelphia
5-137	Josh Scobee, PK, Louisiana Tech	Jacksonville
5-149	Maurice Mann, WR, Nevada	Cincinnati
7-245	Courtney Anderson, IE, San Jose St.	Oakland

## 2005

1-32	Logan Mankins, OL, Fresno St.	New England
3-77	Ryan Moats, RB, Louisiana Tech	Philadelphia
4-133	James Sanders, S, Fresno St.	New England
6-185	Chad Owens, WR, Hawai'i	Jacksonville
7-219	Adrian Ward, DB, UIEP	Minnesota
7-229	James Kilian, QB, Iulsa	Kansas City

## 2006

2-47	Daryn Colledge, OT, Boise St.	Green Bay
2-58	Richard Marshall, CB, Fresno St.	Carolina
5-165	Tony Moll, OT, Nevada	Green Bay
6-184	Adam Jennings, WR, Fresno St.	Atlanta
6-185	Tyrone Culver, FS, Fresno St.	Green Bay

## 2007

2-58	Ikaika Alama-Francis, DE, Hawai'i	Detroit
2-60	Samson Satele, C, Hawai'i	Miami
2-61	Gerald Alexander, DB, Boise St.	Detroit
3-72	Marcus McCauley, DB, Fresno St.	Minnesota
3-78	James Jones, WR, San Jose St.	Green Bay
3-80	Paul Williams, WR, Fresno St.	Tennessee
4-111	Dwayne Wright, RB, Fresno St.	Buffalo
5-151	Jeff Rowe, QB, Nevada	Cincinnati
5-172	Legedu Naanee, WR, Boise St.	San Diego
6-181	Reagan Mauia, FB, Hawai'i	Miami
6-191	Korey Hall, ILB, Boise St.	Green Bay
6-200	Meliia Purcell, DE, Hawai'i	Cleveland
7-214	Chris Denman, OT, Fresno St.	Tampa Bay
7-222	Derek Schouman, TE, Boise St.	Buffalo
7-229	John Broussard, WR, San Jose St.	Jacksonville
7-236	Nate Ilaoa, RB, Hawai'i	Philadelphia
7-254	Jonathan Holland, WR, La. Tech	Oakland

## 2008

1-12	Ryan Clady, OT, Boise St.	Denver
4-110	Shawn Murphy, OG, Utah St.	Miami
4-113	Dwight Lowery, CB, San Jose St.	NY Jets
5-143	Orlando Scandrick, CB, Boise St.	Dallas
5-145	Jason Shirley, DT, Fresno St.	Cincinnati
6-182	Kevin Robinson, WR, Utah St.	Kansas City
6-186	Colt Brennan, QB, Hawai'i	Washington
7-252	David Vobora, LB, Idaho	St. Louis

## 2009

2-52	David Veikune, DE, Hawai'i	Cleveland
3-68	Jarron Gilbert, DT, San Jose St.	Chicago
3-90	Chris Owens, CB, San Jose St.	Atlanta
3-94	Ryan Mouton, CB, Hawai'i	Tennessee
6-174	Tom Brandstater, QB, Fresno St.	Denver
6-184	Bear Pascoe, TE, Fresno St.	San Francisco
6-191	Coye Francies, CB, San Jose St.	Cleveland
6-198	Jacob Ingram, LS, Hawai'i	New England
7-221	Eddie Williams, FB, Idaho	Washington
7-243	Marko Mitchell, WR, Nevada	Washington

## 2010

1-12	Ryan Mathews, RB, Fresno St.	San Diego
1-17	Mike Iupati, OG, Idaho	San Francisco
1-29	Kyle Wilson, CB, Boise St.	New York Jets
3-74	D'Anthony Smith, DT, LA Tech	Jacksonville
6-174	Dennis Morris, TE, LA Tech	Washington

## 2011

2-36	Colin Kaepernick, QB, Nevada	San Francisco
2-44	Titus Young, WR, Boise St.	Detroit
3-66	Dontay Moch, OLB, Nevada	Cincinnati
3-78	Austin Pettis, WR, Boise St.	St. Louis
3-90	Curtis Marsh, CB, Utah St.	Philadelphia
3-96	Alexander Green, RB, Hawai'i	Green Bay
4-112	Greg Salas, WR, Hawai'i	St. Louis
4-131	Davon House, CB, NM State	Green Bay
5-132	Kealoha Pilaes, WR, Hawai'i	Carolina
5-144	Shiloh Keo, S, Idaho	Houston
5-160	Nathan Enderle, QB, Idaho	Chicago
5-162	Chris Carter, OLB, Fresno St.	Pittsburgh
7-204	Virgil Green, TE, Nevada	Denver
7-210	Andrew Jackson, OG, Fresno St.	Atlanta
7-213	Brandyn Thompson, CB, Boise St.	Washington
7-238	Daniel Hardy, TE, Idaho	Tampa Bay

## 2012

2-47	Bobby Wagner, LB, Utah State	Seattle
4-106	Robert Turbin, RB, Utah State	Seattle
4-107	Devon Wylie, WR, Fresno State	Kansas City
4-120	James-Michael Johnson, LB, Nevada	Cleveland
5-142	Brandon Marshall, LB, Nevada	Jacksonville
5-154	Korey Toomer, LB, Idaho	Seattle
6-184	Isaiah Frey, CB, Nevada	Chicago
6-196	Jonte Green, CB, New Mexico State	Detroit
7-209	Aaron Brown, LB, Hawai'i	St. Louis
7-212	Michael Smith, RB, Utah State	Tampa Bay
7-227	Rishard Matthews, WR, Nevada	Miami



**Chris Owens, DB**  
Atlanta Falcons  
San Jose State, 2005-08



**Fred Evans, NT**  
Minnesota Vikings  
Texas State, 2004-05



**Jarrett Bush, CB**  
Green Bay Packers  
Utah State, 2004-05

# 2012 WAC COMPOSITE SCHEDULE

## **Thursday, August 30**

UTSA at South Alabama, 6:30  
Texas A&M at Louisiana Tech (Shreveport), 6:30 (ESPNU)  
Sacramento State at New Mexico State, 6:00  
Southern Utah at Utah State, 6:00  
Eastern Washington at Idaho, 6:00

## **Friday, August 31**

San Jose State at Stanford, 7:00 (P12N)

## **Saturday, September 1**

Texas State at Houston, 7:00 (CSS)

## **Friday, September 7**

Utah at Utah State, 6:00 (ESPN2)

## **Saturday, September 8**

Idaho at Bowling Green, TBA  
Texas A&M-Commerce at UTSA, 1:00  
New Mexico State at Ohio, 7:00  
Texas Tech at Texas State, 6:00 (ESPN3)  
Louisiana Tech at Houston, 7:00 (CBS SN)  
UC Davis at San Jose State, 5:00

## **Saturday, September 15**

UTSA at Georgia State, 6:00  
Rice at Louisiana Tech, 6:00 (ESPN3)  
Idaho at LSU, 7:00 (ESPN3)  
New Mexico State at UTEP, 6:00  
Colorado State at San Jose State, 5:00 (ESPN3)  
Utah State at Wisconsin, 7:00 (BTN)

## **Saturday, September 22**

Northwestern Oklahoma State at UTSA, 1:00  
Wyoming at Idaho, 2:00  
Stephen F. Austin at Texas State, 6:00  
Utah State at Colorado State, 5:00  
Louisiana Tech at Illinois, 7:00 (BTN)  
New Mexico at New Mexico State, 6:00 (ESPN3)  
San Jose State at San Diego State, 5:00

## **Saturday, September 29**

San Jose State at Navy, 3:30 (CBS SN)  
Idaho at North Carolina, TBA  
Louisiana Tech at Virginia, TBA  
Nevada at Texas State, TBA (ESPN Platform)  
\*UTSA at New Mexico State, 6:00  
UNLV at Utah State, 6:00 (ESPN3)

## **Friday, October 5**

Utah State at BYU, TBA

## **Saturday, October 6**

Texas State at New Mexico, TBA  
\*New Mexico State at Idaho, 2:00  
UNLV at Louisiana Tech, 6:00 (ERT)

## **Saturday, October 13**

UTSA at Rice, 2:30 (FCS)  
\*Utah State at San Jose State, 1:00 (ERT)  
\*Idaho at Texas State, 6:00

## **Saturday, October 20**

\*San Jose State at UTSA, 1:00  
\*New Mexico State at Utah State, 1:00  
\*Idaho at Louisiana Tech, 6:00 (ERT)

## **Saturday, October 27**

\*Utah State at UTSA, 1:00  
\*Texas State at San Jose State, 1:00  
\*Louisiana Tech at New Mexico State, 6:00

## **Saturday, November 3**

New Mexico State at Auburn, TBA  
\*Texas State at Utah State, 1:00  
\*UTSA at Louisiana Tech, 3:00 (ERT)  
\*San Jose State at Idaho, 2:00

## **Saturday, November 10**

\*Louisiana Tech at Texas State, TBA  
Idaho at BYU, TBA  
\*San Jose State at New Mexico State, 1:30  
McNeese State at UTSA, 4:00

## **Saturday, November 17**

Texas State at Navy, 3:30  
BYU at San Jose State, 1:00  
\*UTSA at Idaho, 2:00  
\*Utah State at Louisiana Tech, 6:00

## **Saturday, November 24**

\*Texas State at UTSA, 1:00  
\*Idaho at Utah State, 1:00 (ERT)  
BYU at New Mexico State, 1:30  
\*Louisiana Tech at San Jose State, 1:00

## **Saturday, December 1**

\*New Mexico State at Texas State, 3:00

*\*WAC Game*

*All times local to playing site*

*Dates and times subject to change*



**Good is good,  
but it is not great.**

**Be Great.  
Play Up.**



[WACSports.com](http://WACSports.com)